



# Furniture from Spain

Downtown Design Dubai 2017

**MUEBLE  
DE  
ESPAÑA**



MUEBLE  
DE  
ESPAÑA

FURNITURE  
FROM  
SPAIN

[www.muebledespana.com](http://www.muebledespana.com)



## The best Spanish design brands on display at Downtown Design 2017

Buyers, retailers, interior designers and architects can expect a cluster of renowned international brands and references to headline the fifth edition of Downtown Design, which will be held in November 14 to 17, including a group of **8 Spanish brands** that will exhibit under the brand **MUEBLE DE ESPAÑA**.

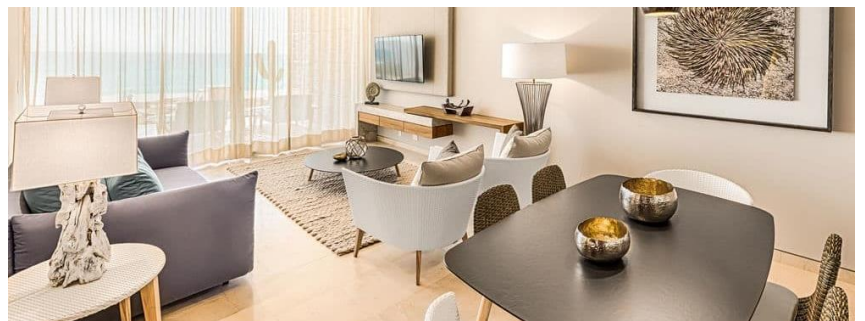
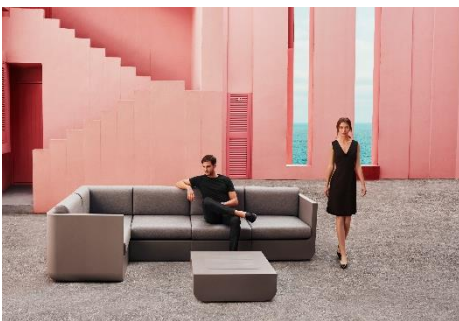
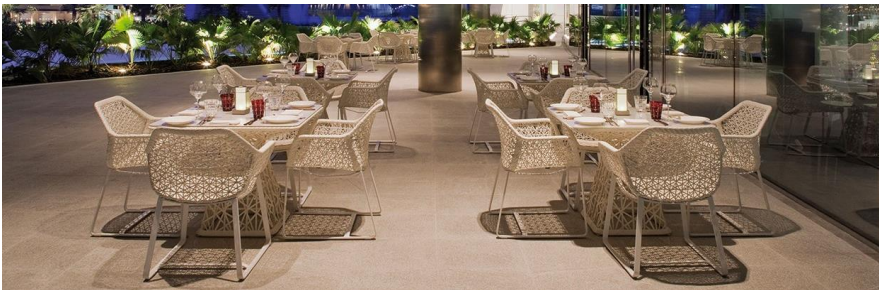
The constantly evolving landscape of the Middle East brings a world of opportunities for Spanish design brands that wish to unlock their potential in the Middle East interior design market and establish new collaborations with the region's architects and interior designers. Together with the residential market, hospitality has been over the latest years one of the targeted sector for Spanish furniture and lighting companies that have worked on major projects all over the region.

The Spanish contingent, organized by ANIEME (Spanish National Association of Furniture Manufacturers and Exporters) and with the support of ICEX (Spanish Foreign Trade Agency), will include brands such as LUXDEMOB, KETTAL, POINT, SANCAL, SANTA&COLE, SKYLINE DESIGN and VONDOM.

They will present unique products across a range of categories for the residential, hospitality and commercial markets, including wonderful collections for stylish outdoor lounge and dining spaces, unique lighting products, exclusive furniture pieces for luxurious ambiances, as well as avant-garde designs and solutions for interior design projects.



# Enjoy the Spanish style!



# Spanish exhibitors

KETTAL / B14  
LUXDEMOB / A18  
POINT / A16  
SANCAL / B12  
SANTA&COLE / B13  
SKYLINE DESIGN / A13  
VONDOM / C19



# KETTAL



**KETTAL, the luxury outdoor experience.** A family-owned furniture manufacturer based in Spain, KETTAL produces high-end outdoor furniture which is timeless, elegant, environment-friendly and looks great in indoors too. Designed by some of the biggest names in the international design scene, KETTAL's furniture represents the contemporary culture and provides solutions to the emerging needs of modern life. Their outdoor range is made from natural materials that are weather resistant and incredibly stylish too.

**KETTAL BITTA by Rodolfo Dordoni.** It's a warm, comfortable outdoor furniture collection featuring a combination of aluminium structures, braided polyester cord seats and comfortable cushions. The new extendable table is available with a teak, marble or aluminium top.

**KETTAL CALA by Doshi Levien.** In 2016, the high-backed KETTAL CALA chair established a new design language for KETTAL based on the combination of industrial design, fine craftsmanship, technology and culture. Made of a powder-coated aluminium frame knitted with ropes, the piece has a majestic presence that subtly plays with transparent and light surfaces and is therefore suitable for both indoors and outdoors.

The idea has evolved with Doshi Levien creating additional pieces for the collection: dining chair, a series of tables and low footstools. The dining table has a monolithic and bold presence, providing a contrast to the lightness of the chairs. It comes with a choice of different tops that includes wood and marble table tops.



## KETTAL

Stand B14

T +34 93 487 90 90

info@kettal.es

www.kettal.com



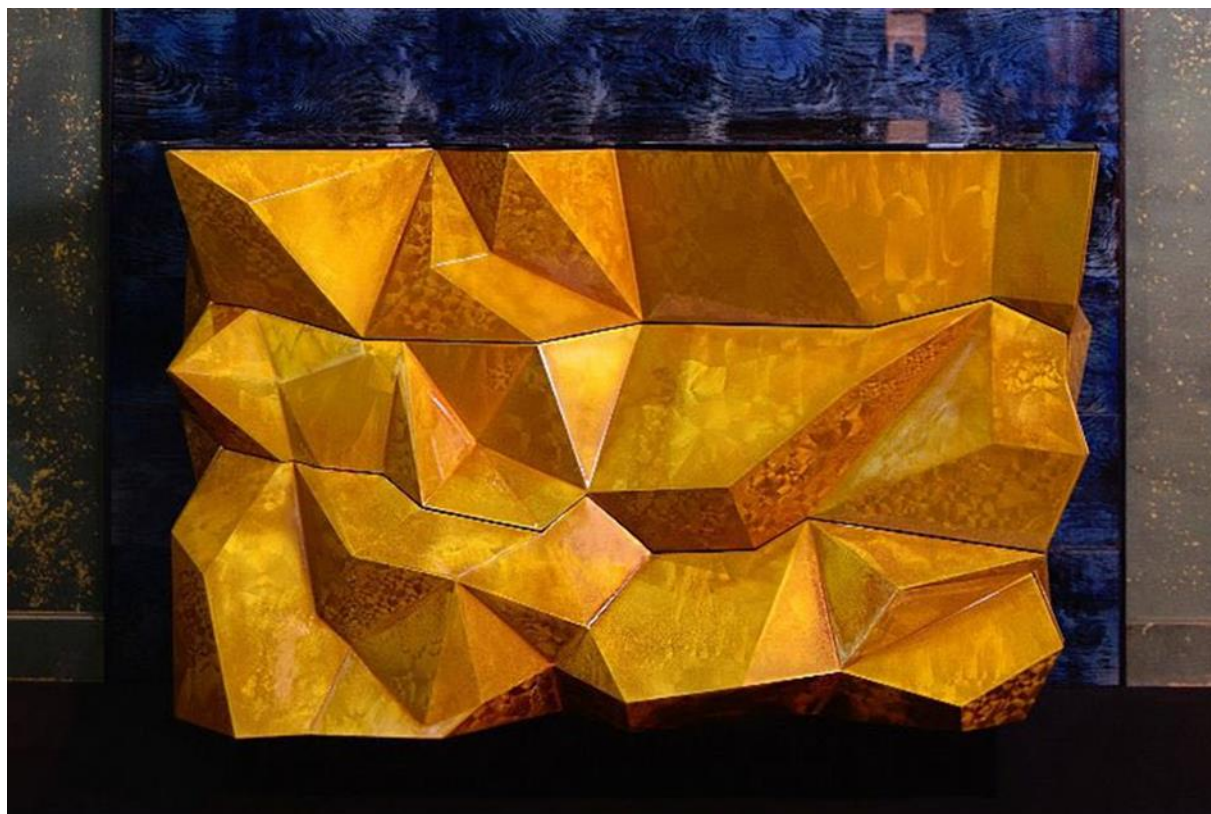
**KETTAL MIA OUTDOOR LAMP by Michel Charlot.** KETTAL MIA is a family of nomadic lamps designed and engineered by Michel Charlot for the Spanish outdoor furniture company KETTAL. The lamp is built around an acid-treated glass diffuser which is protected by a large polypropylene lampshade.

**KETTAL GEOMETRICS RUGS by Doshi Levien.** As a development of an abstract theme, Doshi Levien created a series of rugs that explores the interplay of different geometries. In the first design, lines are laid over solid colours to make a spatial and layered effect, while in the second design, tiny rectangles or blocks of colour are spaced apart and repeated to create a fine mélange.





**LUXDEMOB**  
Luxury Designed Furniture



**LUXDEMOB, unique jewel furniture.** Art and functionality find the equilibrium in the creations by Joan Ramon Roca and the Artdemob team, who have worked together in developing the most luxurious and exclusive furniture designs in the European market. Specially conceived to brighten the project beyond the world of the ideas, LUXDEMOB is born to spread the concept of jewel-furniture and to perpetuate the new era ruled by functional art; the kind of art that transcends aesthetics adding new value to luxury concepts.

Breaking the mould with a strong, luxe statement, LUXDEMOB's series of jewel furniture pieces exude creativity, sophistication, innovation and are characterized by a distinctive style. Each piece is a unique work of art specifically created for individual customers. That means everything they create is exclusive and special, handmade to the smallest detail and designed from zero according to customers' desire.

To ensure the highest standards of quality, the firm uses only the best raw materials on the market, such as gold, bronze, precious stones, goatskin parchment and the best woods. Precious finishes give the final touch enhancing the excellence and sophistication of pieces. All the golden elements are made of real 24k gold or gilded in 24k gold leaf or 24k gold-plated. Except on one of the special lacquer effects where the golden elements are painted on wood. In this case, the same effect can be done in any colour.

**Asymmetrical Drawer.** Featuring a spectacular design that recalls the crystal structure of precious stones, this sideboard consists of drawers with automatic opening. Its asymmetrical shape and its endless geometries make this piece unique in its category.



## LUXDEMOB

Stand A14

T +34 610 688 444

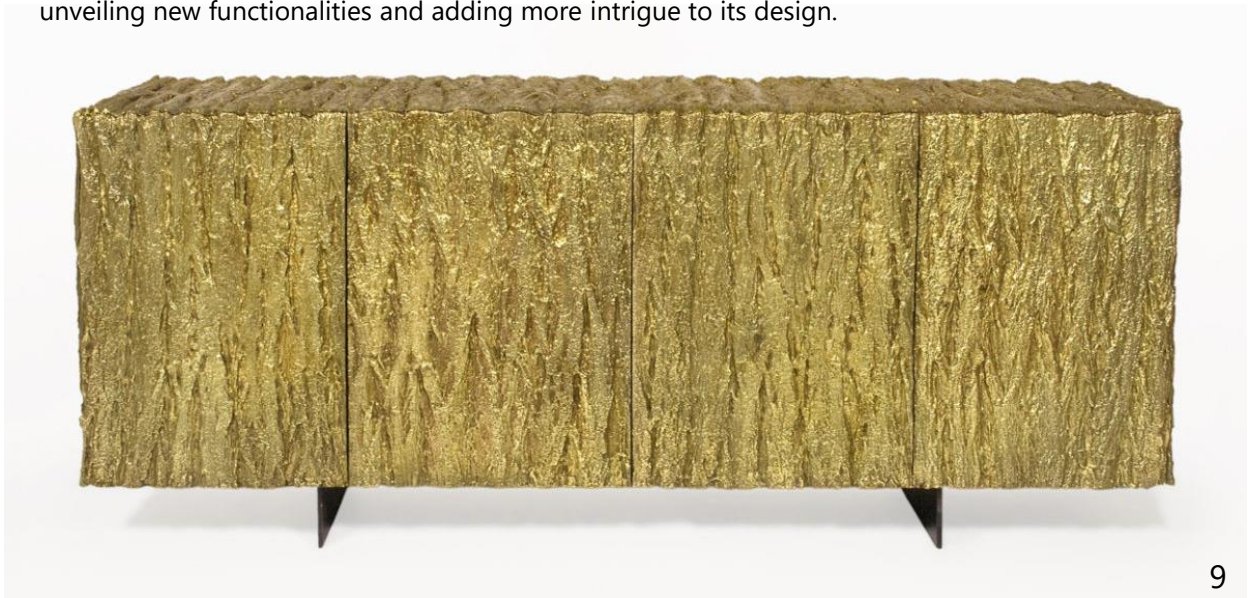
m.valles@luxdemob.com

www.luxdemob.com



**Piano Black Wooden Console.** The hand carving of Ginkgo Biloba leaves covered with gold leaf embellishes the top of this console that features the most harmonious design in the collection. Finished in high gloss black and with golden contrasts, its configuration and elegance balance at a glance all the lines that outline it.

**Gold&Bronze Tree Bark Front Chest.** The raw surface of oak trees is perfectly replicated in this spectacular sideboard made of gold-plated cast bronze. Four automatic drawers slide vertically unveiling new functionalities and adding more intrigue to its design.



# POINT.



**POINT, paying homage to outdoor life.** Led by the 3rd generation and with nearly 100 years of experience, the Valencia-based company has become a world leader in the manufacturing of outdoor furniture and a pioneer in the use of braided fibre materials. The main key to their success lies in the perfect combination of design, tradition and innovation.

The Mediterranean roots are indeed a core value, and this is reflected in the selection of textures, materials and colours for their designs. The furniture catalogue is extensive and includes various models of chairs, sofas, tables, daybeds, deckchairs, swinging chairs, garden umbrellas, outdoor lighting, etc.

**FENNEC outdoor collection by Gabriel Teixidó.** This collection is the result of a smart combination of design, comfort and functionality. Made of the exclusive Point's Shintotex® fibres, which are weather-resistant and incredibly durable, it includes tables, chairs, sofas and armchairs.

**PAL outdoor collection by Francesc Rifé.** A modular system made of a solid teak platform that supports upholstered modular elements. This collection allows for endless compositions that make it possible to configure the most relaxing spots in the outdoors.



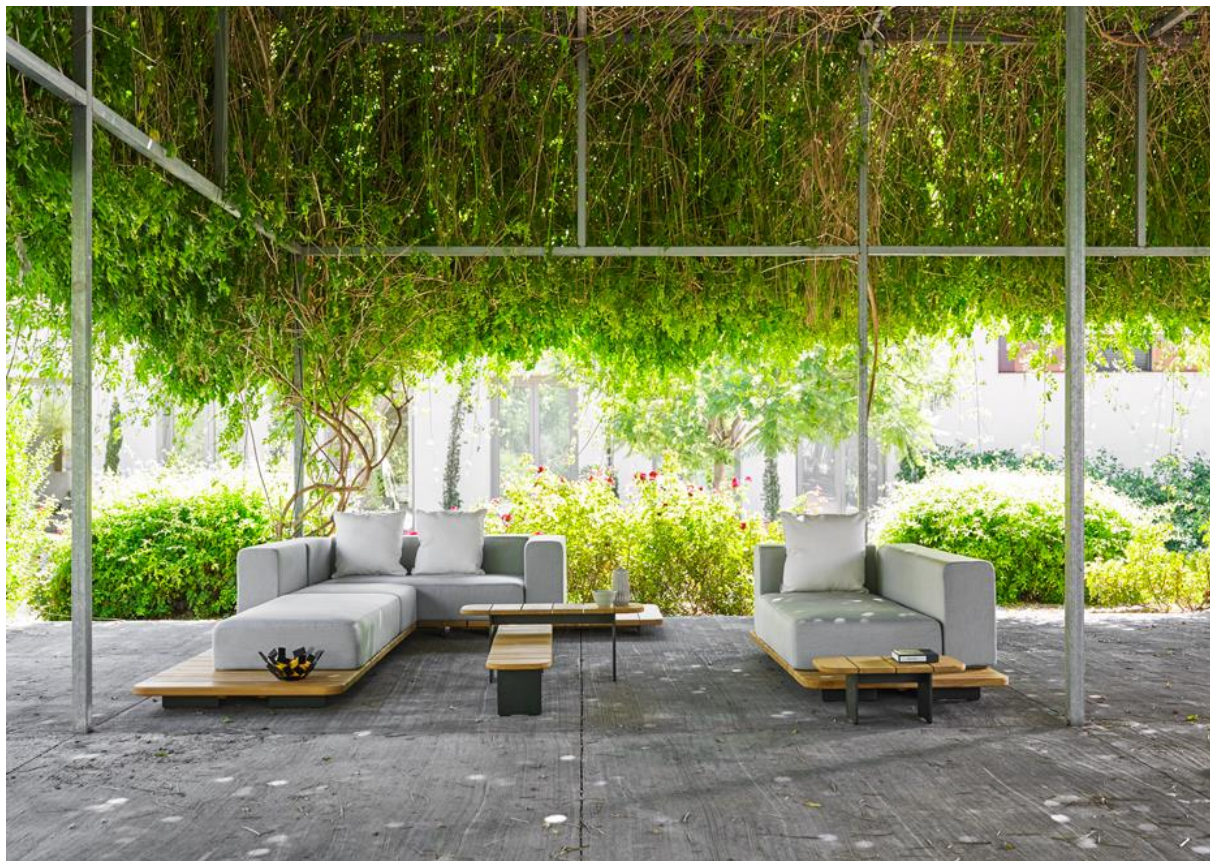
## POINT

Stand A16

T +34 96 648 01 32

info@point-sl.com

www.point1920.com



**WEAVE outdoor collection by Vicent Martínez.** The armchairs, sofas, modular elements and auxiliary tables of this collection have been specifically designed to configure highly comfortable relaxing spaces in gardens and terraces. Lacquered with epoxy paint, the structure is made of tubes and profiles of curved and welded aluminum.

The backs and sides are woven and covered with textured polyester cord of special cut fiber for exteriors. Seats and backrests come with upholstered cushions.





**SANCAL, design culture, innovation, personalization.** Founded in the early nineteen-seventies by Santiago Castaño Carpena, the family-owned SANCAL has taken a new turn over the past years to become one of the most interesting furniture companies in Spain. Over the years, they have stayed true to their Spanish identity and their passionate, open, joyful yet humble approach is captured in every design.

They work with world renowned designers and focus on innovative furniture and comfort unlike any other. That's why today the brand can boast some of the most acclaimed international designs, such as the TEA collection by José Manuel Ferrero, the KONOHA benches by Toyo Ito, Ioanna Vautrin's PION tables, the FLOAT benches by Karim Rashid or the TALO sofa by the German Sebastian Herkner...

**ENIGMA COLLECTION.** As we stand before a geopolitical panorama that seems almost apocalyptic, SANCAL defends humour as an antidote and a driving force for changes. This is the philosophy behind ENIGMA, the most dramatic and theatrical collection they have ever conceived. Rejecting the staid conservatism of reedited past glories, SANCAL looks to the future with seven new products for home and contract environments: DEEP by Rafa García, LA ISLA by Note Design Studio, TORTUGA MINI by Nadadora, MAGNUM by EstudiHac, PION PETRA by Ioanna Vautrin, BEETLE and ESTANTE by MUT and Juan Ibañez.

**DEEP sofa by Rafa García.** Featuring a rational, classic design, the new modular programme by Rafa García has been carefully studied to provide uncompromised comfort with the slightest artifice possible. With this design, Rafa reinforces the contemporary side of SANCAL's catalogue and demonstrates that simplicity is not incompatible with luxury.



## SANCAL

Stand B12

T +34 968 718 074

iibanez@sancal.com

www.sancal.com



**BEETLE sound-absorbing panels by MUT Design.** Inspired by the insect world, the sound-absorbing panels are textile sculptures that resolve the uncomfortable problem of background noise, overcoming the difficult balance between sound dissipation and decoration.

**LA ISLA seating programme by Note Design Studio.** SANCAL turned to Note, a Swedish design studio, to provide travellers or people in lobbies or public spaces with relief and comfort. The upholstery is just as comfortable as it looks with generous proportions and soft materials. A place to share with strangers while respecting each other's privacy; isolated but not excluded.





# SANTA & COLE



**SANTA&COLE, good designs with meaningful stories to tell.** SANTA&COLE is an international lighting and furniture editor with roots in Barcelona, Spain. Since 1985, they have collaborated with Spanish and internationally renowned designers, including Miguel Milá, Antoni Arolas, Antoni de Moragas i Spà, Arno Jacobsen and Ilmari Tapiovaara, among others, in developing high-quality lighting and furniture products that improve the way we live in our surroundings; at home, in the office, and in the city.

SANTA&COLE's design philosophy leans towards modern aesthetics rather than futuristic and post-modern trends. Interested in rationality and balance, in silence instead of stridency, they are particularly motivated by the fact that they are the standard-bearers of a fine sample of Spanish designs throughout the world.

**CESTITA BATERIA lamp by Miguel Milá.** SANTA&COLE presents a wireless adaptation of the iconic CESTA family designed by Spanish master Miguel Milá: the small rechargeable CESTITA table lamp. This is an enchanting object and lamp, recently enhanced to embody freedom of movement, which by the way was also the designer's original conception for it back in 1962.

**VAGHE STELLE pendant lamp by Antoni de Moragas i Spà.** Inspired by both the bare lamps of Adolf Loos and by Leopardi's, this extremely elegant lamp was envisioned during the restructuring process of an old textile warehouse in Barcelona's new Brasserie Flo in 1982.

Two concentric brass rings suspend, through glass ossicles placed at different heights, up to 18 carbon filament bulbs, which provide an exquisite amber light, like a vague trail in the night.





**CIRIO pendant lamp family by Antoni Arola.**

"The origins of this family stem from the large conventional lamps for indoor public settings. My early inspiration came probably in Istanbul in the great Hagia Sophia mosque." — ANTONI AROLA

The CIRIO (candle in English) family arose in the quest for a system that applied LED technology to soft lighting in large public venues. We soon realised that the lamp's secret lays in the creation of versatile structures from which to hang as many light sources or candles as required. Each candle has its own core of LEDs that links it to the upper structure from which the desired shade hangs.



**SKYLINE DESIGN, luxurious comfort under the skies.** Founded in 1978, the firm has established itself as one of the leading manufacturers and suppliers of luxury outdoor furniture and since then their furniture collections have become synonymous with impeccable quality. Every piece is hand made by highly skilled artisans in their factory, where they manufacture unique products by combining the most innovative technology with traditional craftsmanship.

The firm offers high quality rattan furniture in a huge range of styles and colours. All SKYLINE DESIGN's collection are made of revolutionary synthetic fibres that are chemical and UV resistant, all-weather proof and provided with high-tensile strength. Aluminium frames are finished using a multi-stage, deluxe powder coating process, ensuring unsurpassed long-lasting quality, and resistance to corrosion and blistering. Outdoor cushions are filled with high-grade polyurethane foam which helps maintain, shape, comfort and durability.

With more than 1,500 employees worldwide, the firm strives to offer a range of unique designs to enhance outdoor living areas, from the luxury hotels to a sophisticated small terrace. Their bespoke service for all designs is aimed at bringing outdoor spaces to life.

**BRAFTA outdoor collection.** One of the most complete collections of the brand, it includes furniture for both dining and lounge spaces. The dining set is formed by a squared table that can accommodate up to 8 people and is complemented by elegant chairs that invite to have a seat and rest. The set of lounge furniture is formed by a modular sofa, coffee table, side tables, armchairs, chaise longue and bench.



## SKYLINE DESIGN

Stand A13

T +34 96 229 52 83

comercial@skylinedesign.es

www.skylinedesign.com



**SHADE daybed.** It's one of SKYLINE DESIGN's most iconic and successful pieces. It has been used to furnish and offer comfort in the outdoor spaces of some of the most renowned hotel chains all over the world. Designed for comfort and luxury, SHADE measures approximately 5 sqm and the elegance of its forms makes it a perfect choice to bring style in every outdoor space. Utilizing revolutionary high-density polyethylene weaving material, SKYLINE DESIGN furniture has high-tensile strength; it is chemical and UV resistant, all-weather proof and 100% recyclable.



### **VINTAGE outdoor collection.**

Perfect to create a charming lounge in the outdoors, the newly launched VINTAGE includes a high-backed sofa and a lounge chair complemented by a wooden round shaped coffee table. The interwoven design of the backrests makes pieces pleasing to the eye while ensuring privacy when used in public areas.

# VONDOM



**VONDOM, a spirit of vanguard.** The Valencia-based VONDOM is a leading company in the design and production of indoor and outdoor furniture. The key to their spectacular success is based on the design culture that inspires the company's indoor & outdoor collections providing spaces with unconventional new dimensions.

Big names of the international design scene, such as Ramón Esteve, Fabio Novembre, Stefano Giovannoni, Eugeni Quitllet, Ora Íto, Ross Lovegrove, Karim Rashid, Javier Mariscal, among many others, are the best ambassadors of the VONDOM's spirit. Sharing with the brand the same passion for shapes, culture, vanguard solutions and design, they have transformed each piece of furniture into an exclusively VONDOM mode of expression. The list of products is long and includes tables, chairs, lounge chairs, sofas, planters, sun loungers, daybeds, canopies, counters, outdoor rugs, lamps, benches, etc.

**The Vela outdoor collection by Ramón Esteve.** VELA offers all the comfort and warmth of indoor collections, but without losing any of its original qualities. The new addition to this sophisticated collection is the circular modular sofa that, as other pieces in the collection, features an innovative and differentiating approach with endless possibilities of configuration. The round shaped design makes it perfect to bring style and comfort to spaces for leisure, meetings or events.

All parts are obtained by rotational molding of low density linear polyethylene. It is a 100% recyclable material that withstands extreme weather conditions and gives lightness to the product. It allows matte, gloss or colour finishes and is ready to incorporate a remote controlled LED lighting system.



## VONDOM

Stand C19

T +34 96 239 84 86

marketing@vondom.com

www.vondom.com



### **VERTEX outdoor collection by Karim**

**Rashid.** The VERTEX collection was created to integrate a more conceptual architectural piece into spaces giving them a more sophisticated touch. VERTEX includes a set of table and chairs with triangular planes that join dynamically together creating comfortable furniture items suitable for dining or meeting rooms, banquet or lecture halls and other casual needs. Every VERTEX item looks as if it were chiselled out from a single block of material; what remains is structural yet beautiful. New additions include also the stools and the bar which are ideal for informal chill-out spaces in the outdoors.

**BROOKLYN stool by Eugeni Quitllet.** Its stylish urban contemporary design, with straight lines and curves that recall the New York City bridge, is very fascinating and recognizable. Made of polypropylene with fibre glass, it is available in multiple finishes and in 2 sizes for indoor and outdoor use.



**MUEBLE DE ESPAÑA is a brand of ANIEME Spanish National Association of Furniture Manufacturers and Exporters**

Find out more about  
**furniture from spain**

Visit **[www.muebledeespana.com](http://www.muebledeespana.com)**  
to get more information about our brands and their  
interior projects.

Follow us

**#SpainFurniture**  
**#SpainDesign**  
**#SpainInteriors**



© ANIEME - MUEBLE DE ESPAÑA