

# GOMARCO



..... *Special edition IMM Cologne* .....

WHERE DREAMS ARE BORN...







Gomarco first steps were taken in the 70's, although the company was finally consolidated in 1977. After laborious human and entrepreneurial efforts, this dream has now been running for more than 40.

Gomarco has been growing yearly thanks to the illusion and enthusiasm of a great team, always looking for innovation to offer you new feelings.

Thanks to their strong values, Gomarco is one of the greatest mattresses manufacturers at European level. We try to adapt to customer's needs because they are the ones that entrust their dreams and it is our main goal to carry them out.

---

Sleep is essential for a person's health and wellbeing. A good mattress is an important investment. However, remember, you spend 365 nights per year on it.

At Gomarco we focus on what you really need, reflecting our 40 years of experience looking after your dreams.

We design and manufacture the rest you deserve and want for yours. All our work is aimed at improving the quality of rest and putting the latest advances to offer new sensations that improve your life and your dreams.

The evolution of rest it is in our DNA and this is breathed from our facilities to every product that comes out of them. Contributing to a healthy life and improving the comfort of people is our motivation and the primary objective of Gomarco.

---





# UP Collection

---

A superior collection for a supreme rest. The mattresses of the UP Collection series are composed of natural materials and, in addition to cotton and

latex, contain viscose, silk and cashmere providing an exquisite touch and a pleasant feeling.

Natural fibers are very resistant. They have thermo-regulation, anti-bacterial and anti-mite properties that prevent humidity inside the mattress.

The pillow top system is an added layer of soft padding stitched to a mattress's top. It is made of latex foam, memory foam, fibers, down, and sometimes soy, and the top layer can give even the firmest mattresses a softer feel for a comfortable sleep.

Flavia combines pocket spring technology SprinSac 7z® and natural fibers, making an ergonomic mattress. It is characterized by its freshness and adaptability.

---



# NUCOL SYSTEM

Nucol® System is formed by high-quality memory foam pieces in different firmness, spread over mattress to fit the body's shape. Besides, each Nucol® has ventilation lines enabling airflow. This provides freshness, breathability and avoids accumulation of heat.

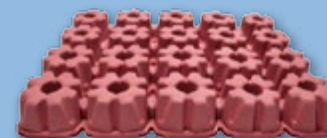
In short, Nucol® System is an innovative support, different and perfect for the most demanding. This technology combines firmness and breathability thanks to its shape, and adaptability, softness and comfort of memory foam.

Nucol® System relieves pressure points to improve blood circulation. It is beneficial to health because avoids numbness, back and neck pains.

These health problems, the pressure and the stress cause insomnia and the Nucol® System helps you to combat it.



The Nucol® System has been tested by the prestigious Estivill Dream Clinic, specialist in Clinical Neurophysiology and Sleep Medicine. The Sleep Clinic has carried out a study that shows all the advantages that the Nucol® System brings to health, both physically and in the field of sleep.



NUCOL® FIRM 100 kg/m<sup>3</sup>



NUCOL® MEDIUM 90 kg/m<sup>3</sup>

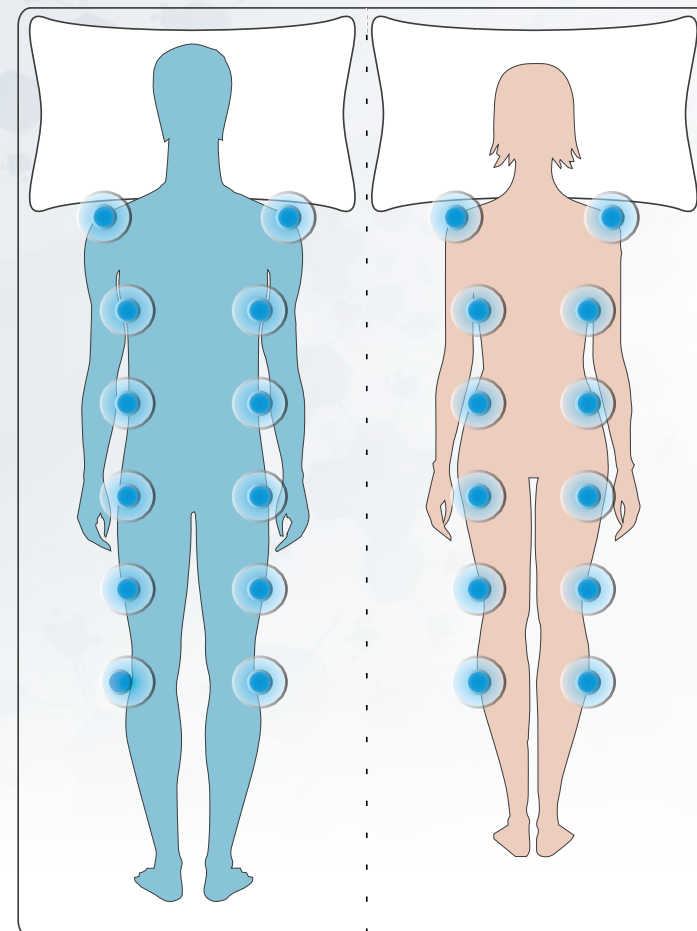


NUCOL® SOFT 80 kg/m<sup>3</sup>





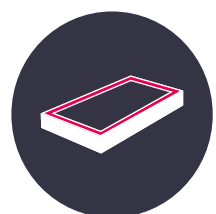
## INTEGRATED MASSAGE SYSTEM



This massage system is located inside the mattress, under the Nucol® System in order to obtain an extra comfort. It is easy to control by remote control.

Massaging discs are distributed in 6 lines (12 points), strategically placed, so that you can choose the vibration per zones.

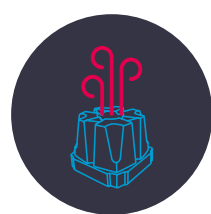
## COMFORTABLE & FRESH



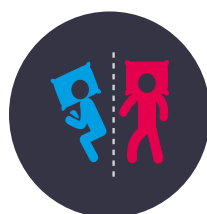
**REINFORCED**  
PERIMETER



**REVERSIBLE**  
TOPPER



**NUCOL AIR**  
FRESH REST



**RESPECT**  
MOVEMENTS

Nucol® System 2.0 has different comfort zones in different firmness and materials to offer soft mattresses, highly adaptable and balanced. Perfect for the most demanding customers.

- Promotes blood circulation
- Reduces muscle tension
- Relieves muscle aches
- Brings a pleasant feeling of relaxation
- Helps to fall asleep naturally





# MICROSAC<sup>®</sup>

Pocket springs MicroSac<sup>®</sup> technology provides maximum adaptability thanks to its small diameter. Its 1140 springs per m<sup>2</sup>, structured in 9 comfort zones, offer the perfect rest.

Springs	Firmness	Gauge Steel	Height	Characteristics
3250 (150x190)	Firm	0,9 - 1 mm	12 cm	9 comfort zones

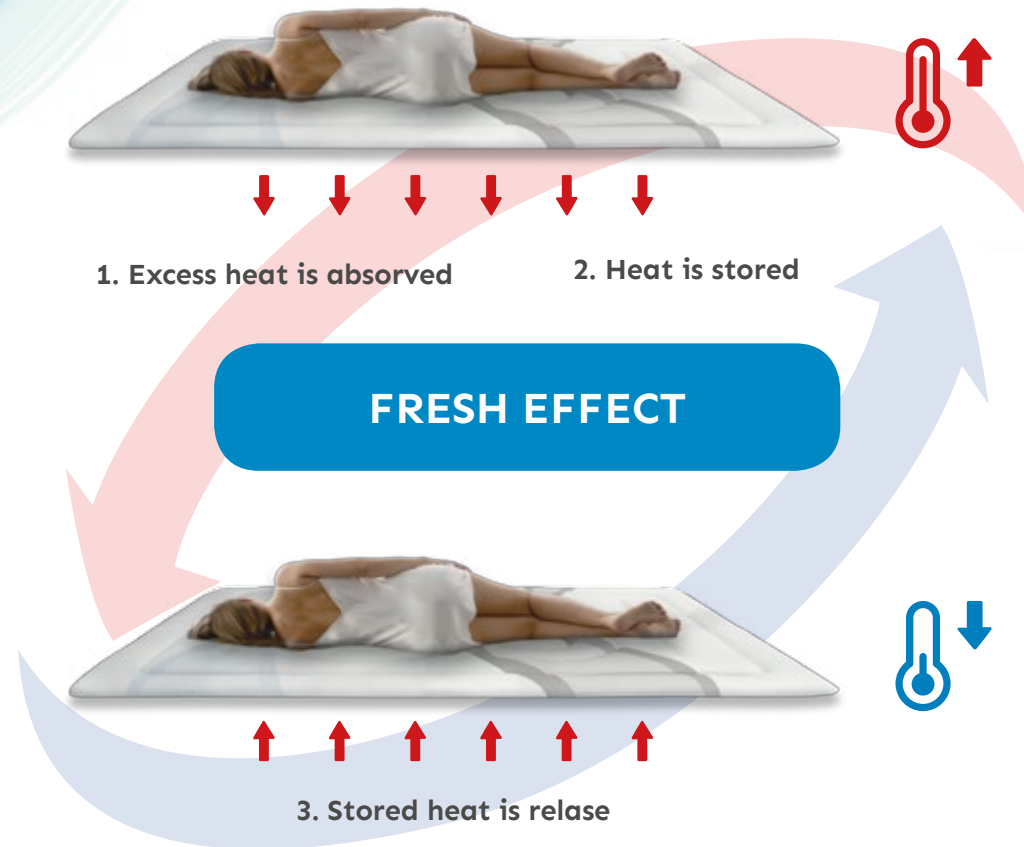






# TECNOFRESH<sup>®</sup>

TECNOLOGY



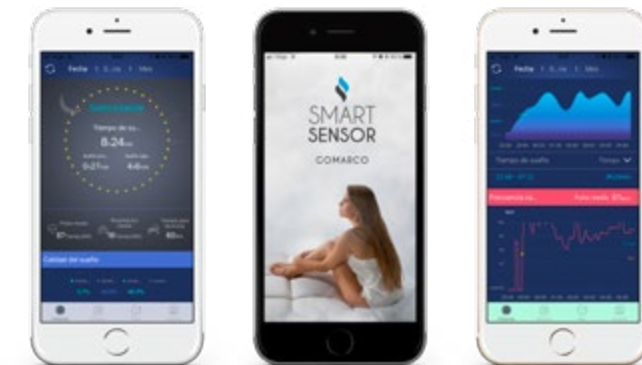
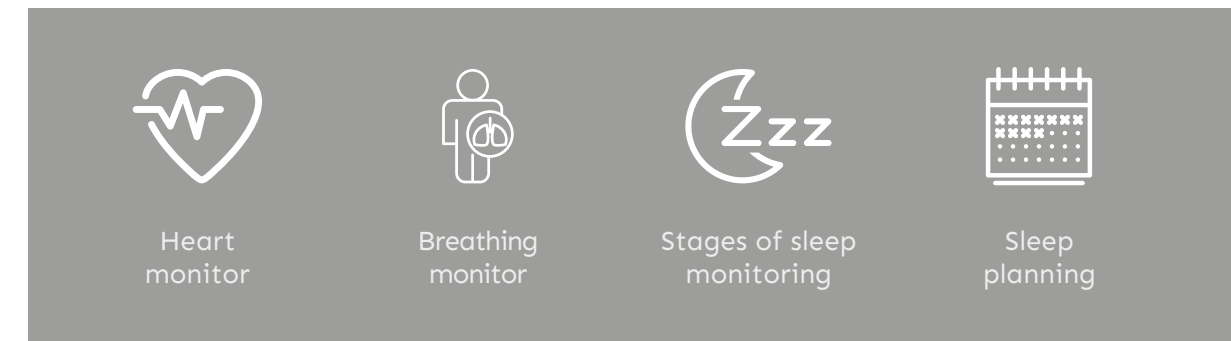
Tecnofresh<sup>®</sup> Technology fabric utilises phase change materials (PCM) that absorb, store and release heat for optimal thermal control, keeping the desired temperature for longer and avoiding sweats or the feeling of cold when we get into bed.

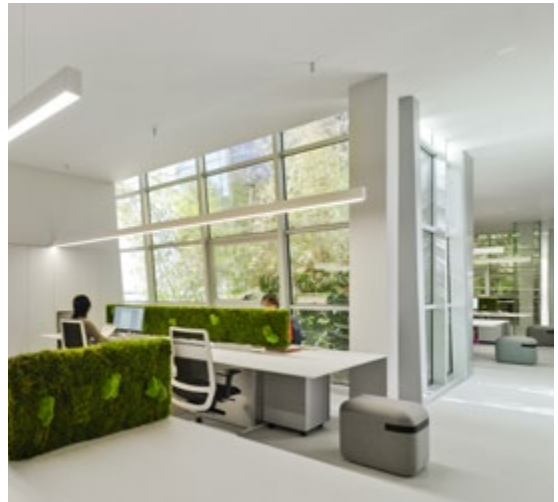
This fabric increase feeling sensation because it has similar properties to the Tecnofresh<sup>®</sup> Technology fabric.

# SMART SENSOR

The SMART SENSOR, patented by Gomarco, is a sleep monitoring system which transmits compiled data via 4.0. Bluetooth to an App with a high degree of precision.

SMART SENSOR analyzed automatically a number of parameters to know sleep quality and sleeping hours.





# GOMARCO

[www.gomarco.com](http://www.gomarco.com)

Ctra. Villena Km. 3,5  
Yecla · 30510 · Murcia · SPAIN  
(+34) 968 790 090 · [info@gomarco.com](mailto:info@gomarco.com)

