

A close-up, high-angle photograph of a modern dining or office table. The table has a light-colored wood top with a visible grain and rounded corners. Its base is a solid, terracotta-colored material with a smooth finish. In the lower foreground, the backrest and seat of a chair upholstered in a textured, brown fabric are visible. The background is a plain, light gray surface.

ofifran

CONTEMPORANEITY AND SELFSTYLE FOR 32 YEARS



Since 1990, the company Ofifran S.L. designs, manufactures and commercializes of ce furniture in more than 50 countries.

Developing and improving its product range constantly giving a lot of importance to the general concept and the diversity of the design by means of looking at every individual detail.

For that reason Ofifran has a way of see and understand every collection, in response to an own image, special and unique that helps to express the individuality and originality of our clients.

NOVELTIES



TOLA
page 10



NIU
page 16



TERRA
page 22



GALLERY
page 50



FREEPORT
page 56



CENTOVENTI
page 62

EXECUTIVE

NOVELTIES SEATING



SENTA'
page 28



KADO
page 32



PIEM SOFAS
page 36



SOFAS GALLERY
page 66



SOFAS RAY
page 70



RAY
page 74

EXECUTIVE SEATING



CHANNEL
page 40



CALA
page 44



BAND
page 78



SQUARE
page 82

CLASSIC



BELESA
page 88



ART DECÓ
page 84



ART MOBLE
page 100

CLASSIC SEATING



KBAM
page 106



ILIUS
page 110



CLASSIC
page 114



CHESTER
page 116



BORDON
page 118

NOVELTIES

TOLA BY DORIGO DESIGN



10

TOLA

TOLA is born from design and handcrafted wood, it is a furniture piece that shows our identity.

The Dorigo Design studio has created this collection composed of executive tables with credenza and meeting tables with a thickness of 80mm on the countertops, American Walnut veneered by our artisan marquetry maker. Tables have 4 robust 110mm inclined columns and plated with radius 100mm interior curved.



11



Tola, semplice architettura.

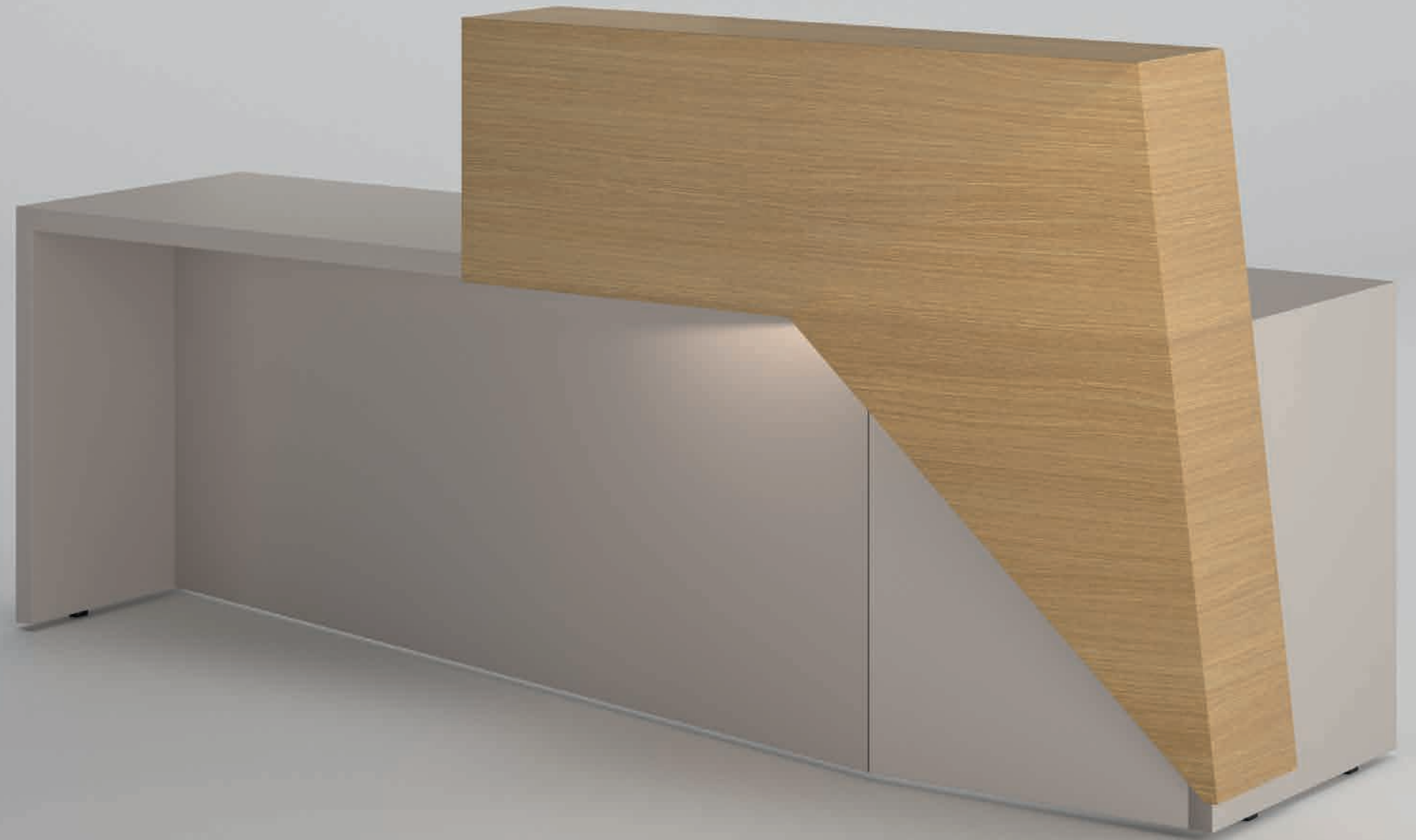


NIU BY PEPE FONT

16

U
N

NIU is a unique reception solution, with a design that adapts to any environment, providing different possibilities as a counter, point of service or workstation. Opposites gathered in this piece in harmonic balance. Like a nest and the branch that supports it, in organic continuity, without knowing where one begins and the other ends. transmit different feelings: dynamism, balance, impossible... Heavy, light. stable, unstable, static, dynamic.



17





TERRA

BY ARNAU·REYNA



22

TERRA

23

Terra collection seeks to combine lightness and freshness through minimal, pure and geometric elements. The subtle interplay between the leg and the top generates a feeling of weightlessness that makes it a timeless, elegant and distinctive product. Terra is a system of configurable meeting tables or benches, developed with a simple and at the same time versatile modularity. Providing collaboration solutions in new work spaces.



26

TERRA

Meeting



27

Office



SENTA BY DORIGO DESIGN

28

SENTA



29



The complexity in the cabinetry of the Senta structure as sections of wooden logs that support a free platform or enriched with cushions on its seat and back that invite relaxation without losing its personality. This collection has versions of one, two and three-seater sofas, with a built-in table system that enhances its functionality. A timeless design for corporate and contract environments.



KADO

32

KADO

Kado is a modular sofa that provides multiple combinations and solutions for collaborative spaces, offices and hotels.

Great comfort and versatility in all its elements: central module, corner unit, terminal with armrest, pouf, footrest and cushions, allow endless visual combinations and endless possibilities.



33



PIEM BY DORIGO DESIGN

36

PIEM SOFAS

The fundamental concept of the PIEM sofa is to offer a space for meeting and privacy. Create an intimate space to retreat into with tall side panels that shield those who sit in them visually and acoustically from the surrounding environment. PIEM has excellent acoustic qualities and works as a visual screen.



37



38

PIEM SOFAS

39

CHANNEL BY DORIGO DESIGN



40

CHANNEL

Channel represents the DNA in Ofifran's design, it is the result of a three-year development process with a long tradition in upholstery. Timeless design, constant development, a long tradition in upholstery, the elegant shape of the lines and the natural wood shell on the back. Channel is a new starting point.



WINNER 2021

41





CALA

CALA is a versatile chair that adapts to different work spaces, with a highly comfortable enveloping backrest. It provides infinite customization possibilities thanks to the combination of finishes on its smooth upholstered shell or Diamond stitching, with different wooden or aluminum bases, gliders or wheels for all types of environments and projects.

44

CALA



45





EXECUTIVE COLLECTION

GALLERY BY DORIGO DESIGN

50

GALLERY



51



Gallery is a project conceived for a modern space, always sophisticated and elegant. The geometry, simplicity, the contemporary expression of the taste in the measured, balanced and carefully designed elements.





FREEPORT BY DORIGO DESIGN

56

FREEPORT



Tradition and innovation come together in the contemporary office. An idea for your office as a concept, projecting to reflect the individuality of who lives it, giving technical and at the vanguard solutions, in full continuity with the idea of your personal project.
Freeport collection, maximum expression of contemporary style.



58

FREEPORT

59



60

FREEPORT II

61

CENTOVENTI TABLES BY DORIGO DESIGN

An elegant image created by the light of the structure, with suspended surfaces combined in lacquer, wood or marble.





GALLERY SOFA BY DORIGODESIGN

66

GALLERY SOFAS



67



An innovative aesthetic quality with variety of finishes make gallery a flexible sofa with response to the demands of lifestyle in the actual office.



RAY SOFA BY DORIGO DESIGN

Tradition, creativity and Mediterranean design, timeless combinations that give RAY a collection with its own stylistic and ergonomic identity.
With three backrest heights, all models are marketed with a polished aluminum or wood-coated base, swivel with four or five star base with wheels or non-slip glides, with an oscillating or return system for the seat and height adjustment.





RAY CHAIRS BY DORIGO DESIGN

A stylish and ergonomic product that expresses its design. Discover the value of innovation, in a perfect balance between tradition and modern office space.
Materials conceived and designed to last over time, showing flexibility and versatility in all their compositions.





BAND BY DORIGO DESIGN

78

BAND

A classic legacy with a contemporary style, BAND has been specially designed for Directional environments for corporate and work uses, in two backrest heights, with an oscillating or return seat system. Handcrafted upholstery with a smooth finish or with diamond stitching in leather or fabric, offers a wide range of combinations with the backrest and base in wood, four-star base or five-star base swivel with wheels or non-slip gliders.



79



SQUARE BY DORIGO DESIGN

82

SQUARE



The stylistic investigation of its surface found on a wood frame fusing a unique form and its amazingly ergonomic and comfortable geometry, make square an exclusive system.



83

84

SQUARE



85



CLASSIC COLLECTION

BELESA BY ESTELLÉS DESIGN

88

BELESA



89

The working environment is simplified searching the essentiality of shapes and sobriety in its design, a new rational approach of the spaces. Behind the apparent simplicity of the shapes of the furniture, hides a high execution level and delicacy, giving to this collection an elegance and warmth in their finishes. Pure lines that generate a new office environment tidy and actual, full of serenity and balance.





ART DECÓ BY VICENT MARTÍNEZ

94

ART DECÓ



95

The collection is inspired by a look into ART DECÓ called "The last total style" of history. A look from the design for a reinterpretation in a contemporary key.

Art Deco was created with influences from neoclassicism, cubism, African, Egyptian and Japanese. Meaning a status from the distinction and classical intemporality. A cult to precision and quality.





ART MOBLE

The classic office is the one that goes beyond the time barrier and where the furniture acquires a life of its own. The classic office goes beyond the groundbreaking character, it is the office where the taste, the senses, the feelings and the harmony are noticed and acquire value. The tradition of marquetry, cabinetry, saddlery, words that evoke ancient craftsmen, added to current technology and the knowledge of people who are experts in works of great tradition and prestige, together with a selection of exquisite raw materials, make it possible to have the ideal elements for the realization of the ARTMOBLE collection.







104

ART MOBLE

105

KBAM

Perfect balance of comfort with timeless geometry. The sofa is available in 2 and 3 seater, with the pouf and the armchair with wood legs.

With their generous stitching and comfortable sitting, this captivating sofa plays the role of the main character in an elegant space. Perfect solution for waiting rooms or rest areas of multipurpose spaces. The armchair optionally has a relax mechanism with three sitting, comfortable and lying positions.

106

KBAM



107





108

KBAM

ILIUS BY VICENT MARTÍNEZ



The most refined handmade upholstery. To lead and manage you need good and excellent chairs. A leader manifests himself in the choice of his seating and in the values that it transmits.



CLASSIC

114

CLASSIC



115



CHESTER

116

CHESTER



117

BORDON

118

BORDON

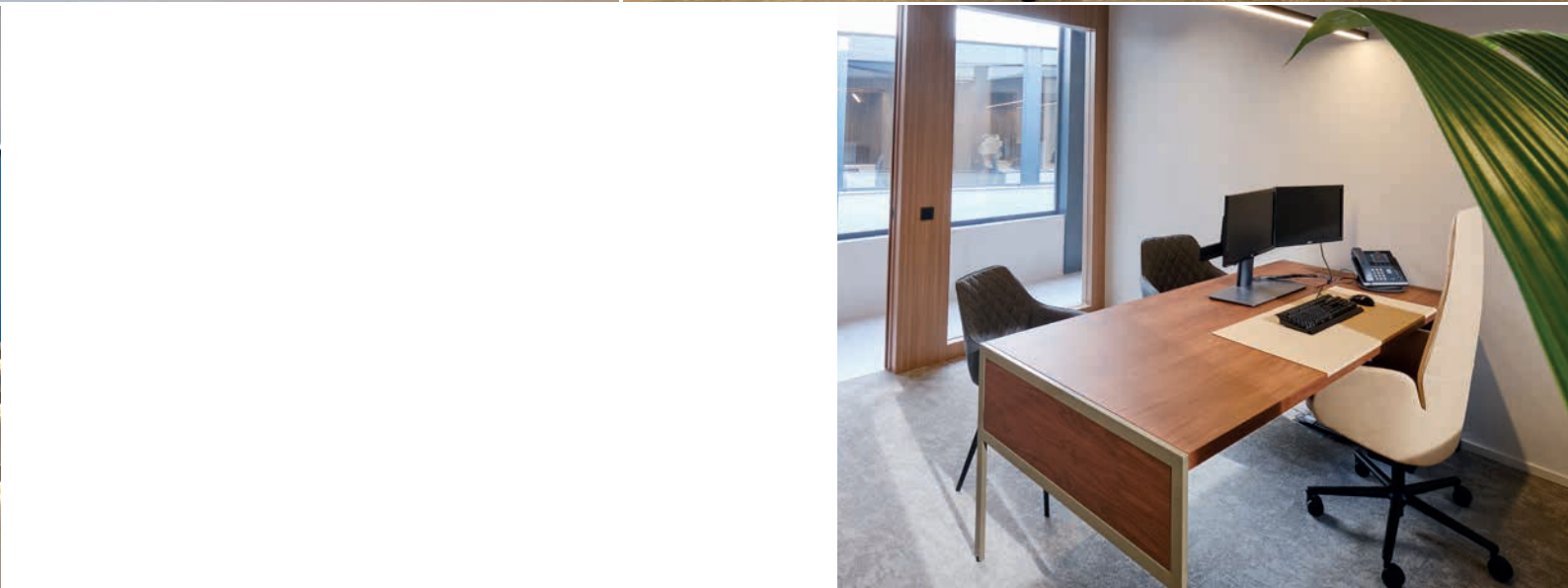
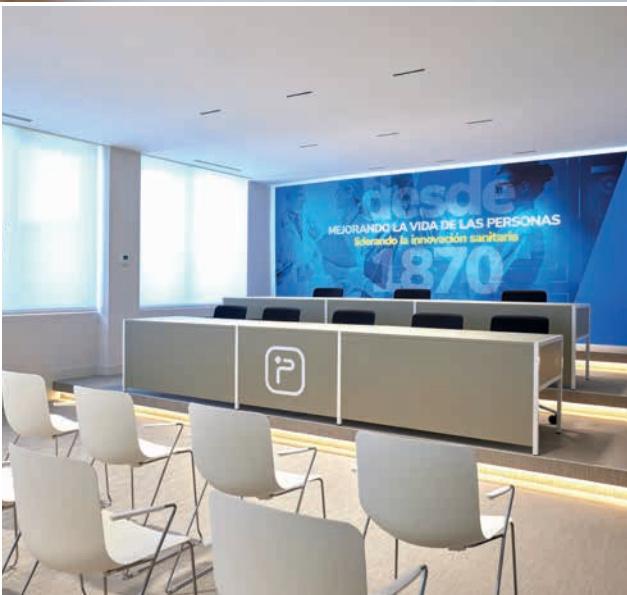
119



P R O J E C T S

OFIFRAN PROJECTS WORLDWILDE

From its beginnings, Ofifran has participated at the most representatives office furniture projects all around the world, corporate projects as well as governmental. Our ability to adapt our products to different client's requirements, lets us participate in the most demanding projects. In these pages we show special emphasis on the most representative projects in which we have recently participated.





FINISHES

NATURAL ASH VENEER

TERRA, NIU, SENTA´



CHESTNUT ASH
FC



SAND ASH
FA



ASH NOIR
FR



ASH WALNUT
FN

NATURAL OAK VENEER

BELESA



BLACK OAK
NT



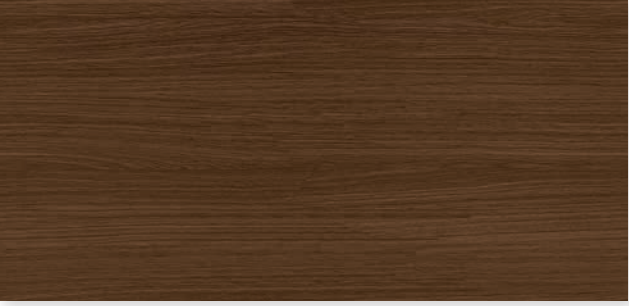
ESPRESSO OAK
EM



WALNUT OAK
NM



NATURAL OAK
RO



WENGUE
WE

TINTED SOLID BEECH WOOD

SQUARE, CENTOVENTI, ILIUS, RAY, CLASSIC, CHESTER, BORDÓN, BASE CONTEMPORÁNEA & ALTA



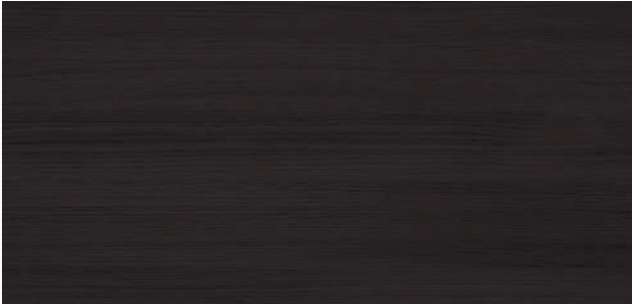
ITALIAN WALNUT
NI



ESPRESSO WALNUT
EM



NATURAL WALNUT
NM



BLACK
NT



WENGUE BEECH
WE



CHERRY
CZ



BEECH OAK
RO



NATURAL BEECH
HN

AMERICAN WALNUT VENEER

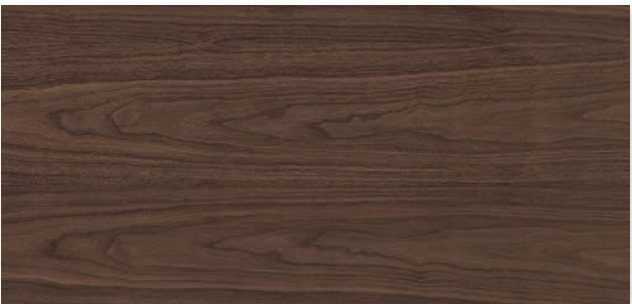
GALLERY, FREEPORT, TOLA, BAND, CHANNEL



ITALIAN WALNUT
NI



ESPRESSO WALNUT
EM



NATURAL WALNUT
NM



NOIR
NT

CLASSIC MARQUETRY

ARTMOBLE



ITALIAN WALNUT
NI



CHERRY
CZ



ESPRESSO
EM



BLACK
NT



WALNUT
NM




WENGUE
WE




NATURAL CLASSIC
CN

ARTDECO



NATURAL WALNUT
NM



ESPRESSO WALNUT
EM



OLIVE ROOT VENEER

BOJ INLAID THREAD

CHERRY VENEER


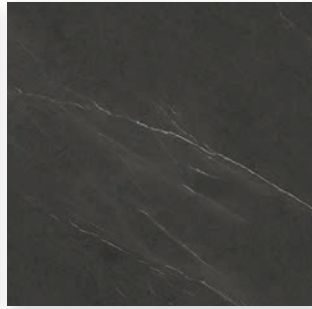
SOLID BEECH WOOD

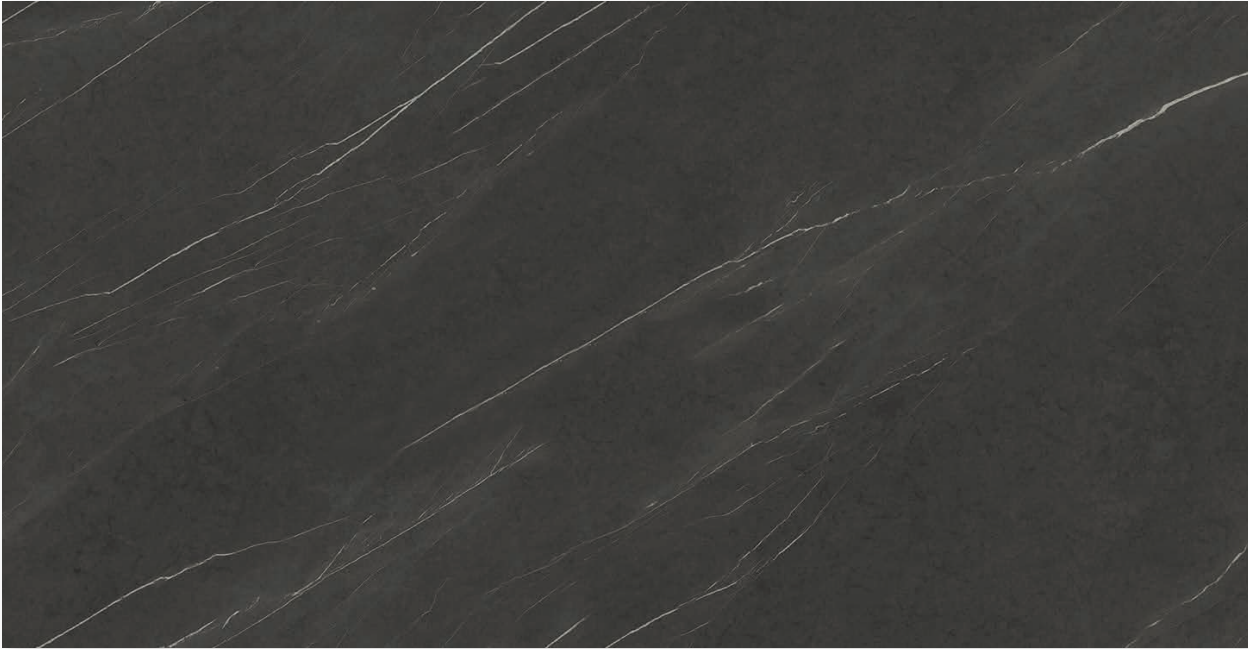


LACQUERED WOOD

			
WHITE L07	IVORY L04	CAMEL L12	PUMPKIN L16
			
ICE L15	GREY L11	STONE L09	BROWN L02
			
RED L05	GREEN L00	ANTHRACITE L08	BLUE L03
			
BORDEAUX L13	UMBER L17	DARK BROWN L06	BLACK L01

NEOLITH

	
MONT BLANC Q64	PIETRA GREY Q63



LEATHER

			
WHITE PI07	IVORY PI04	CAMEL PI12	PUMPKIN PI16
			
ICE PI15	GREY PI11	STONE PI09	BROWN PI02
			
RED PI05	GREEN PI00	ANTHRACITE PI08	BLUE PI03
			
BORDEAUX PI13	UMBER PI17	DARCK BROWN PI06	BLACK PI01

ECOLEATHER

			
WHITE PO07	IVORY PO04	CAMEL PO12	RED PO05
			
GREY PO11	STONE PO09	BROWN PO02	BORDEAUX PO13
			
BLUE PO03	ANTHRACITE PO08	GREEN PO00	
			
BLACK PO01	DARK BROWN PO06		

FIORE FABRIC



TF07 TF10 TF06 TF05

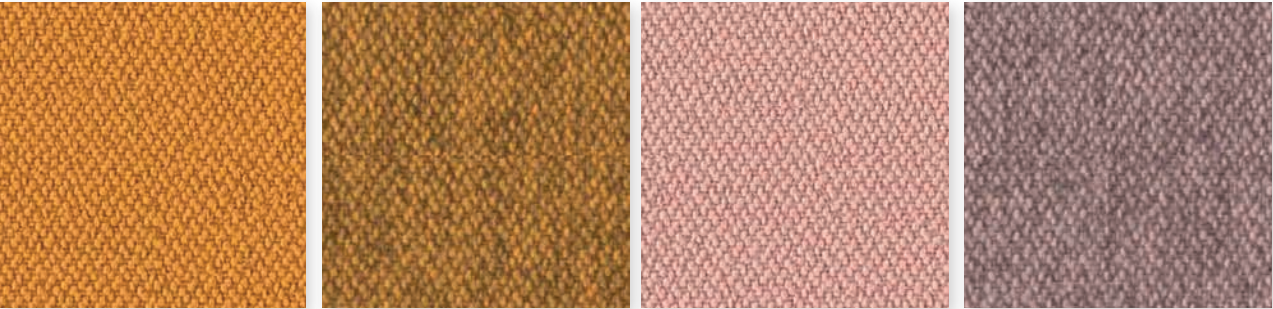


TF11 TF13 TF15 TF03



TF17 TF18 TF20 TF19

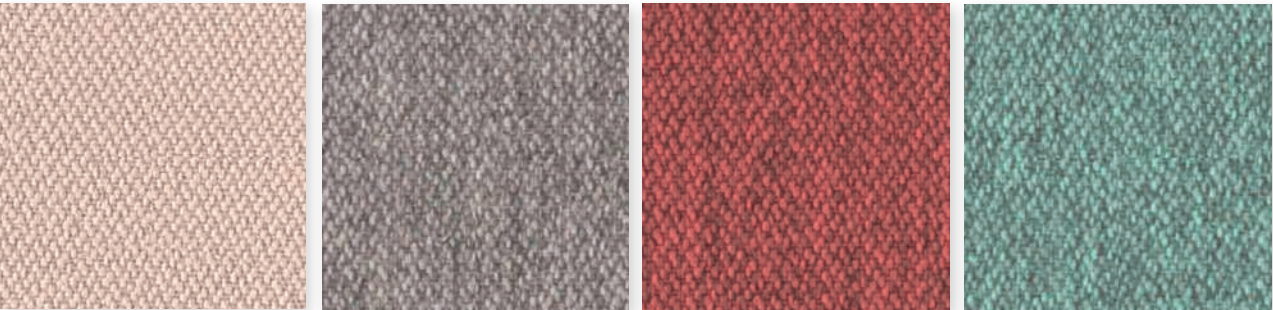
RELICE FABRIC



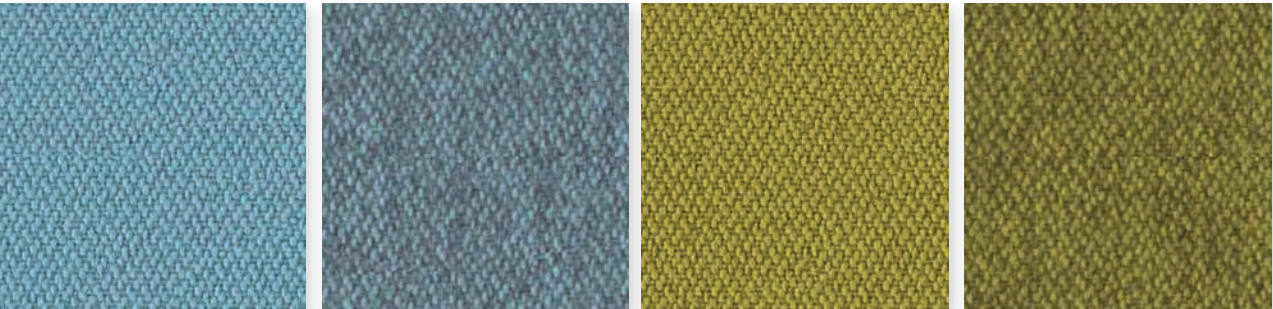
TR04 TR14 TR08 TR18



TR03 TR13 TR05 TR15



TR01 TR11 TR17 TR16



TR12 TR22 TR28 TR38

UPHOLSTERY

BRONX FABRIC

			
BEIGE TB34	CAMEL TB39	TAUPE TB32	BROWN TB36
			
BORDEAUX TB30	ORANGE TB42	YELLOW TB40	ELEFANT TB38
			
LIGHT GREY TB37	ASH TB35	TURQUOISE TB41	DARK GREY TB33
			
BLACK TB31			

BOSTON FABRIC

			
MUSTARD TS78	TRUFFLE TS74	LAVANDER TS82	BLACK TS81
			
FOREST TS80	GREEN TS77	LIGHT GREY TS72	MOUSE TS71
			
OCEAN TS76	TURQUOISE TS73	SKY TS70	
			
RED TS75	PINK TS79		

UPHOLSTERY

LIVERPOOL FABRIC



PERL
TL54



FOG
TL52



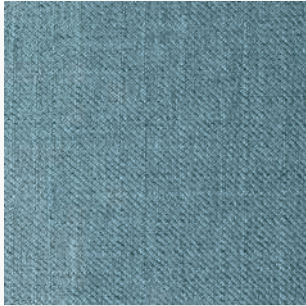
YELLOW
TL55



MOKA
TL56



SAFIRA
TL62



SKY
TL57



OCEAN
TL53



ANTHRACITE
TL58



RED
TL50



CITRIC
TL59



CREAM
TL61




ASH
TL60




BLACK
TL51


PROJECT BACKUP TOOLS NEAR TO YOU

For the correct organization and planning of your different designs, Ofifran places at your disposal various on-line tools to facilitate the staging of your more demanding furnishing office projects.





TECNICAL AND PRODUCT CATALOGUES

 The advantage of consulting and downloading all our catalogs. All the necessary technical information about our products.





3D FILES

 Our 3D files library compatible with the most current design programs at your disposal.



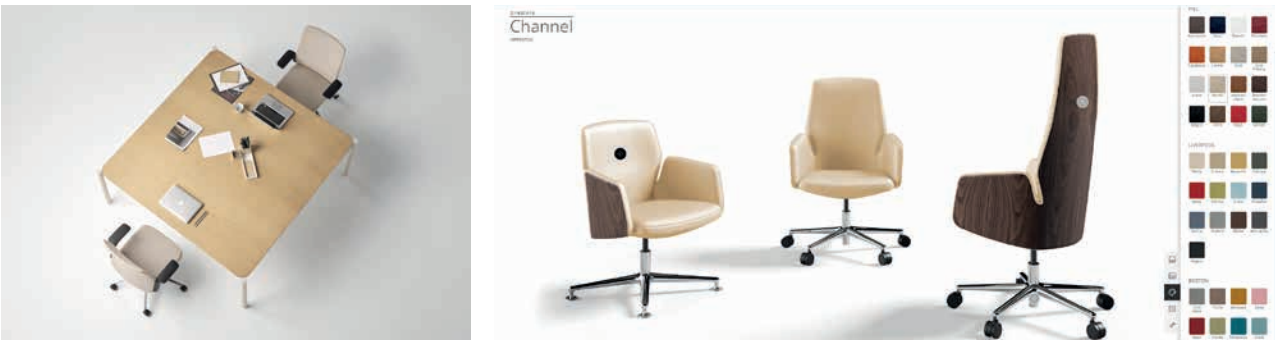
IMAGES

 Download and create your own library of images from our website.



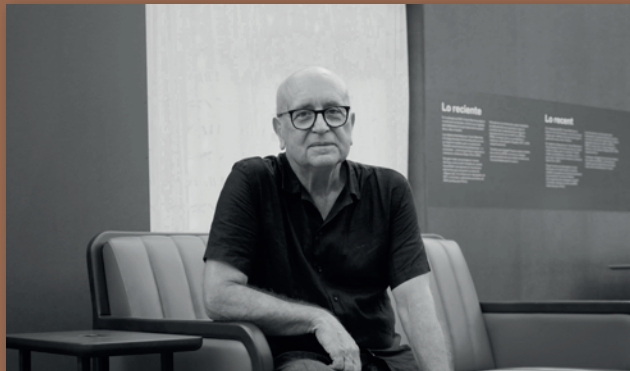
ONLINE COLOR

Configure and simulate our products in our different finishes.





DORIGO DESING



VICENT MARTINEZ



ARNAU·REYNA



ESTELLÉS DESIGN



PEPE FONT

An aerial photograph of a dense forest, likely a coniferous forest, with a dirt road running horizontally through the middle. The trees are lush green, and the road is a light brown color. The overall scene is a natural, undisturbed landscape.

SUSTAINABILITY

From Ofifran we are committed to a sustainable environment, and for this reason, we support our manufacturing process in compliance with the UNE-EN ISO 14006 standard certification: eco-design. Sustainability, like eco-design, seeks to reduce the environmental impact of products and manufacturing processes throughout their life cycle. This includes from the extraction of raw materials to the manufacturing process, transportation, use and the end of life of the products.

Eco-design is based on the idea that it is possible to design products respecting sustainability, using less resources and generating fewer waste and polluting emissions. To achieve this, at Ofifran, we introduce the environmental variable in the design and manufacturing of our furniture.

Eco-design also focuses on maximizing energy efficiency and the use of sustainable materials and technologies. In addition, it seeks to promote the reuse and recycling of products at the end of their useful life.

For this reason, the wood that we use at Ofifran to make our products, comes from sustainable forests, that is, forests that are managed in such a way that they maintain their biodiversity, their productivity, their regeneration capacity, their vitality and their ability to comply with all their ecological, economic and social functions now and in the future, and without all this implying damage to other forests, which allows nature to regenerate, helps to maintain biodiversity and reduces greenhouse gases, leads to water regulation and protects the soil.

Thus, in our environmental sustainability policy, we believe in five fundamental principles.

Sustainable design

Sustainability from the first sketch of our furniture. From the beginning of the creation of a new collection, at Ofifran, we collaborate with our designers so that this product adapts to sustainability standards in the manufacturing process, adapting design nuances that make it easier to meet the reduction objective waste and impact on environmental footprint.

Innovation

Innovation as a principle of sustainability in which we continually seek new ways to manufacture our collections in a more sustainable way, using more efficient and less polluting technologies and processes. Improving our manufacturing lines with more efficient tools and machinery at an energy and productive level.

Energy Efficiency

Reducing the use of resources in the manufacturing process, reducing the use of natural resources such as water and energy in the manufacturing process of our furniture. We do this through the implementation of energy conservation and efficiency practices in manufacturing.

Efficiency

The recycling of waste from the manufacturing process, promoting the creation of new materials and finished products, reducing the waste of raw materials. This helps reduce the demand on resources and prevent pollution.

Collaboration

Collaboration with our suppliers whom we identify as our collaborators, an extension of our company who must share our commitment to total quality that meet the requirements of our customers.

For all these reasons, at Ofifran we firmly believe in the deployment of this operational excellence, which allows us to comply with the commitments within our sustainability policy.

Offering ideas for improvements and new products is an opportunity that we all share and a responsibility that we must all accept. We seek to promote and reinforce the entrepreneurial spirit that allows us to achieve our quality objectives..

CERTIFICATIONS

ISO 9001 - Quality management system
ISO 14001 - Environmental management systems
ISO 14006 - Environmental management systems

UNE EN 1335-1:2021
UNE EN 1335-2:2019
UNE EN 16139:2013vc2015
UNE EN 527-1:2011
UNE EN 527-2: 2017+A1:2019
UNE EN 14073-2:05
UNE EN 14073-3:05
UNE 14074:05

QUALITY

Within Ofifran Group, Operational Excellence means increasing our customer’s satisfaction, our market position and financial results by ensuring continual quality and cost improvement in our processes, products and services. Deployment of Operational Excellence enables us to meet the commitments within our Quality Policy.

