



NEW COLLECTIONS





*We are a Spanish luxury outdoor furniture brand which designs, manufactures and distributes around the world.*

*Our brand is mainly recognized for our spectacular daybeds, which has been chosen to furnish many hotels and resorts of the main hotel chains of the globe such as Palladium, Hyatt, Sheraton, Hilton or Marriot among others. These pieces contribute a sophisticated design to the spaces that furnish and a pleasant sensation of luxury and comfort to those who enjoy them, both key points of our success.*

*We take a special careful development of our products using high quality materials such as synthetic fibers, aluminium or waterproof upholstery, that are safe for the environment and 100% recyclable. The handmade finishes of the manufacturing process like the artisan weaving, gives a special touch of personality to our pieces.*

*With a solid distribution network around the world, we have managed to be present in the five continents, being Indonesia our exclusive manufacturing point. To this must be added the new and impressive showroom that we recently opened in the city of Surabaya (Indonesia) and that will undoubtedly be a new triumph for the recognition of our brand.*

## OUR DESIGNERS



### SANTIAGO SEVILLANO

Valencia, Spain.

*Santiago Sevillano was born in Valencia in 1975. After reaching the mastery of upholstered furniture in his father's studio, he studied Industrial Design at the Polytechnic University of Valencia and San Pablo CEU University.*

*Santiago has been working as a product designer since he finished university, he is a member of ADCV / BEDA. His designs have been published in several media publications, both written (CASAVIVA, CASAHOGAR, DDN, INTERNI MAGAZINE, Merkado, LUST, etc.) or online (Core77, yankodesign, Notcot, Trendhunter, designspotter, desingmilk, design and designo, etc.)*

*His latest work for Skyline Design® is our cover piece, the innovative daybed Surabaya, manufactured in several colors and available to be combined in different ways*

### BELÉN BURGETE

Getxo, Bizkaia – Spain

*Born in Ontinyent (Valencia), she completed her interior design studies at the School of Arts and Crafts. To expand her knowledge, she studied as a Higher Technician in Building Projects, where she deepened her passion for architecture and design.*

*After several years working in design studios, she decided to start her own, working on architecture and interior design projects, as well as in other fields such as product design. Her designs have a conceptual, fresh, elegant, and Mediterranean focus that brings a unique atmosphere to living spaces.*

*Currently, she is the director of the design department at VOOLCAN group, where in addition to creating her own pieces and collections for the brand, she is in charge of supervising all the designs that are produced*



### MUKA DESIGN LAB

Getxo, Bizkaia – Spain

*Muka Design Lab is an industrial design studio awarded with different international prizes, specialized in creating furniture, household items and products with identity and character.*

*His work has been featured in AD Architectural Design, Fast Company, Archi Expo, Dezeen, El País and awarded at international design exhibitions in Milan and Los Angeles, as well as awarded with a RedDot Award Design Concept and a German Design Award.*

*They work with great local artisans and workshops to design everyday objects that people love. From sustainable furniture to the design concepts they create, they start with a story that brings each object to life.*



### NOEL ROYO

Cebu, Philippines

*Born in Cebu, Philippines, Noel began his career as a draftsman. After years in the sector, he had a turning point in his life and it is when he decides that he wants to become a world-known designer.*

*Currently, he is the head of R&D and the Skyline Design® chief designer. Nature and humanity are his main sources of inspiration for his designs, creating pieces that instinctively turn into elegant forms endowed with great comfort.*

*Noel has a long career with more than two decades of experience in the design world. He has a unique creativity that added to his great knowledge of the latest techniques and technologies has led him to be awarded in several international prestigious events.*







---

## COLLECTIONS

KRABI  
ARENA  
ALASKA  
RODONA

HANGING CHAIR MOMA  
DAYBED FABER KUBU BETTA

---



# K R A B I

This collection represents the perfect combination of pure lines with the sinuosity of the braid that allows to glimpse the structure of the pieces. The light skeletons give this collection a sophisticated architectural look that makes it the perfect choice for the trendiest spaces.



KRABI COLLECTION | LIVING



KRABI COLLECTION | DINING



KRABI COLLECTION | LOUNGERS



# ARENA

With this collection we unite modernity and tradition. We take the classic design of the braid, and we bring it to contemporary pieces that are made to stand out. The perfect option to decorate relaxed spaces.



ARENA COLLECTION | LIVING



ARENA COLLECTION | LOUNGERS + DAYBED



ARENA COLLECTION | BALCONY



ARENA COLLECTION | DINING



# ALASKA

In this new collection we combine natural tones with teak. The contrast between textiles, the back and the legs makes this one of the most interesting and appealing collections.



ALASKA COLLECTION | LIVING



ALASKA COLLECTION | DINING



ALASKA COLLECTION | DAYBED



ALASKA COLLECTION | BARSTOOL + BAR TABLE



# RODONA

This collection, designed by Santiago Sevillano, stands out because of its comfortable and large seats. Greatly versatile pieces that adapt to every space, thanks to their timeless aesthetic.



RODONA COLLECTION | DAYBED



RODONA COLLECTION | LIVING



RODONA COLLECTION | DINING + BALCONY



# M O M A

This collection is one of the most recognizable due to its defined style. The contrast between the materials used stands out, as well as the big size of its seats, contributing to its comfort.



MOMA COLLECTION | HANGING CHAIR





# FABER KUBU BETTA

A trend that, to us, is now a classic. More than a piece, an experience to whom enjoys it. Feeling the calmness through the natural materials and design. Dreaming awake is now possible.



FABER KUBU BETTA | DAYBED







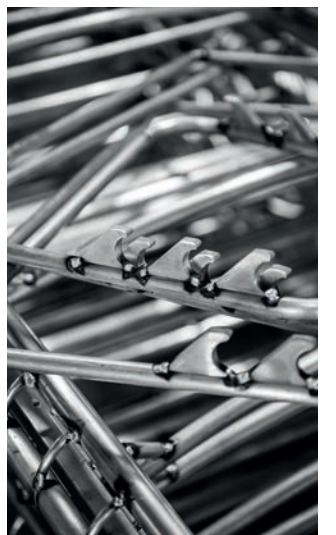
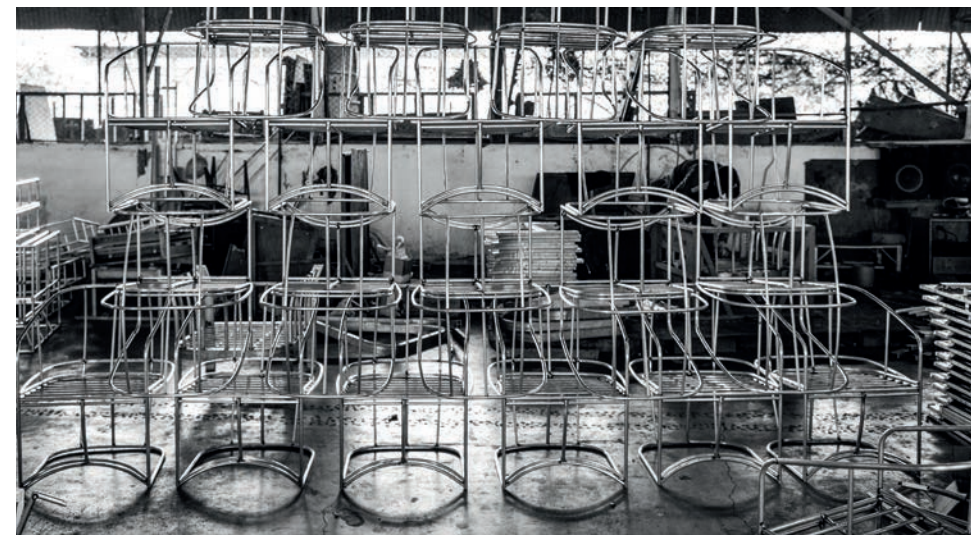
## SKYLINE DESIGN® CUSTOM MADE

### CUSTOM DESIGNS

At Skyline Design we provide our professional service for residential and commercial projects. (such as restaurants, hotels, cruise ships, etc ...).

With 30+ years of experience in manufacturing furniture, our amazing team of 1000+ people, all combined with our facilities with state-of-the-art equipment, allow us to customize our furniture all catered to the clients need by design, measurements, materials and finishes.

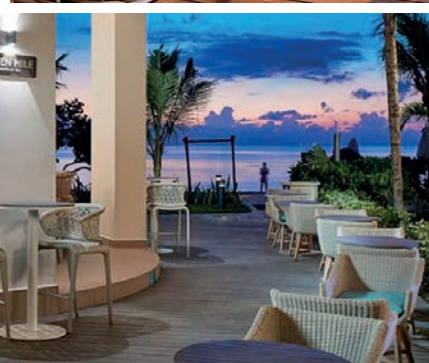
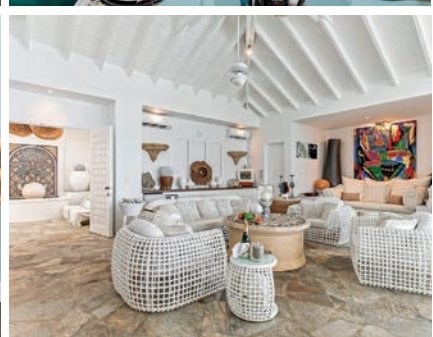
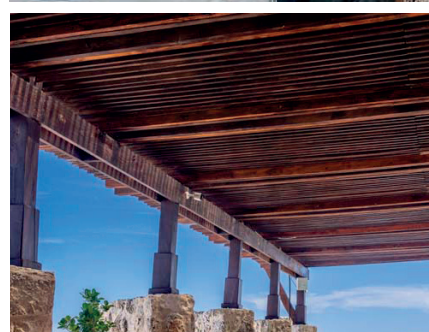
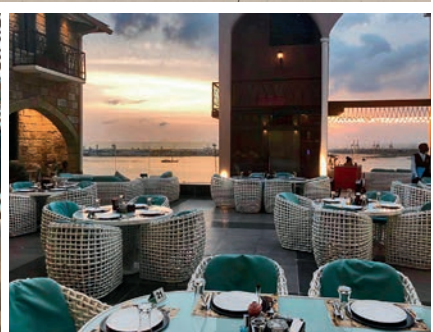
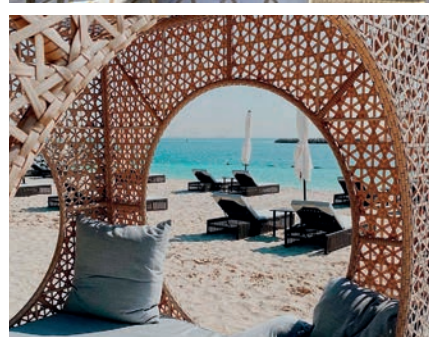
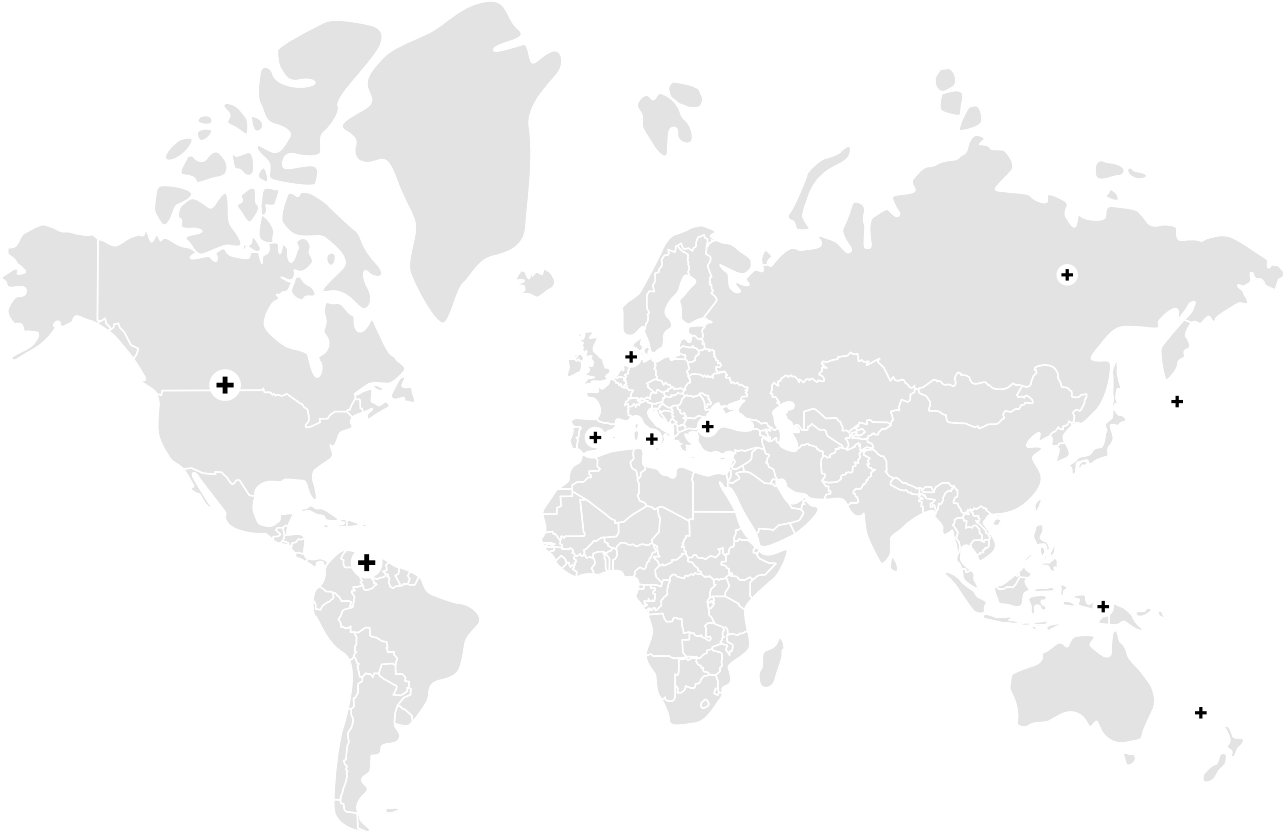
We accompany our clients from the initial project to the last detail, putting at your disposal our design, production and assembly team, as well as our great experience in contract projects all over the world to achieve outstanding results.



The realization of the orders will be confirmed prior assessment by the design and production department.  
Production and realization time: 100 days.



WORLD WIDE  
PROJECTS







comercial@skylinedesign.es  
WWW.SKYLINEDESIGN.ES