

TANGRAM

COLLECTION

TANGRAM

COLLECTION



Where the magic begins...

The conceptual transformation as growth of what was, to meet what should be. A magical process, without limits, where the adaptability, versatility and fun transform the use of a rug in a magical way.

La transformación conceptual como crecimiento de lo que fue, para encontrarse con lo que debe ser. Un proceso mágico, sin límites, donde la capacidad de adaptación, la versatilidad y la diversión transforman el uso de una alfombra de manera mágica.

La transformation conceptuelle : évolution d'une rencontre entre l'essence du passé et du présent. Un processus merveilleux, sans limites, où la capacité d'adaptation, la polyvalence et le divertissement transforment l'usage d'un tapis de manière magique.



The evolution

A process where everything changes without losing the identity. A change to the new while maintaining the purpose for which it was created, with the ability to adapt to any environment and different situations taking different shapes.

Un proceso donde todo cambia sin perder la identidad. Un cambio hacia lo nuevo manteniendo el propósito por el que se creó, con la capacidad de adaptarse a cualquier entorno y situaciones distintas adoptando diversas formas.

Un processus où tout change sans perdre l'identité. Un changement vers la nouveauté tout en conservant l'objectif pour lequel il a été créé, avec la capacité de s'adapter à tout type d'environnement et aux différentes situations en adoptant plusieurs formes.

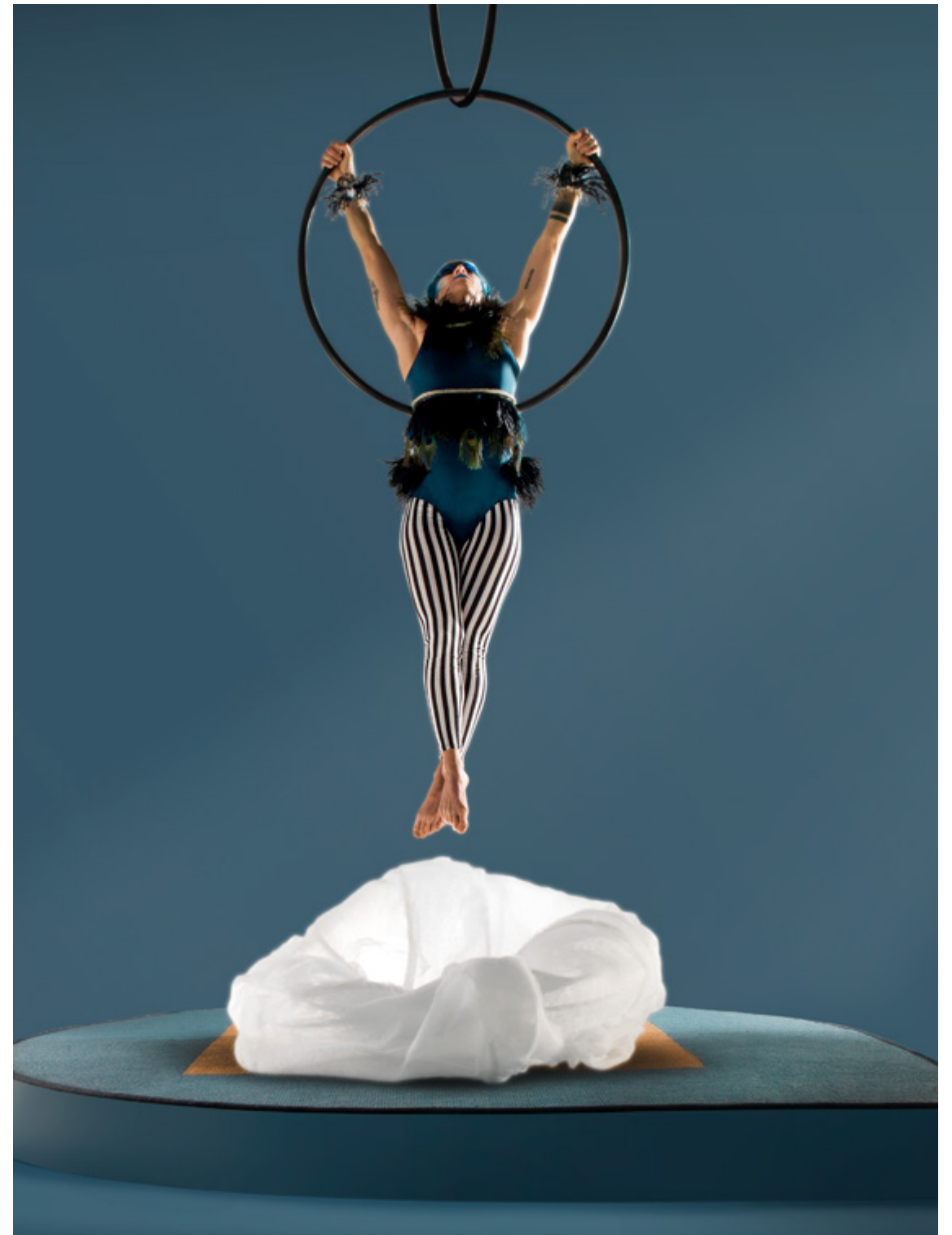
A New Concept...

Reversible use

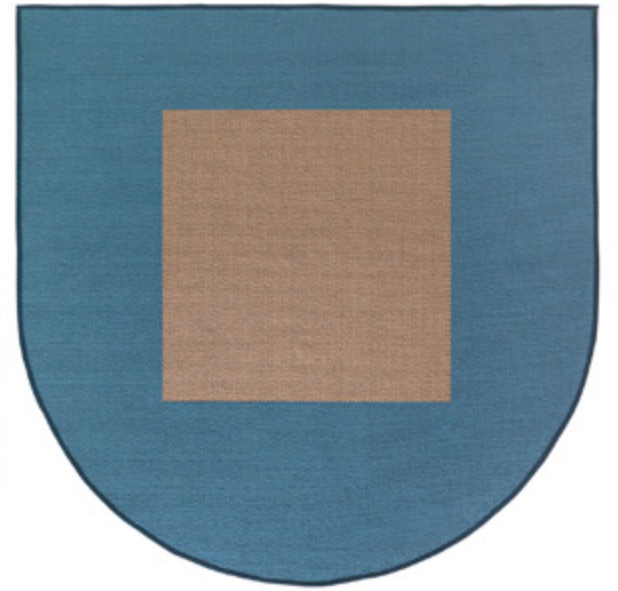
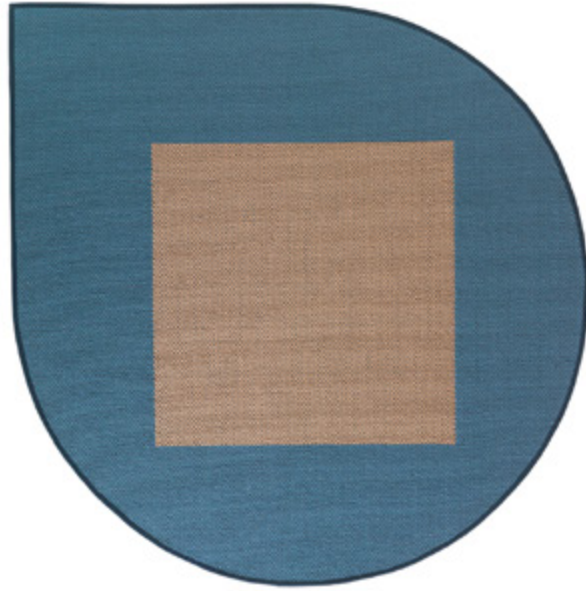
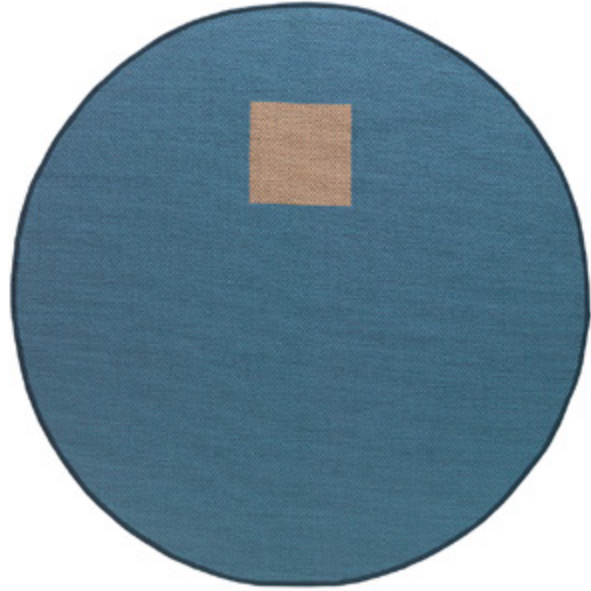
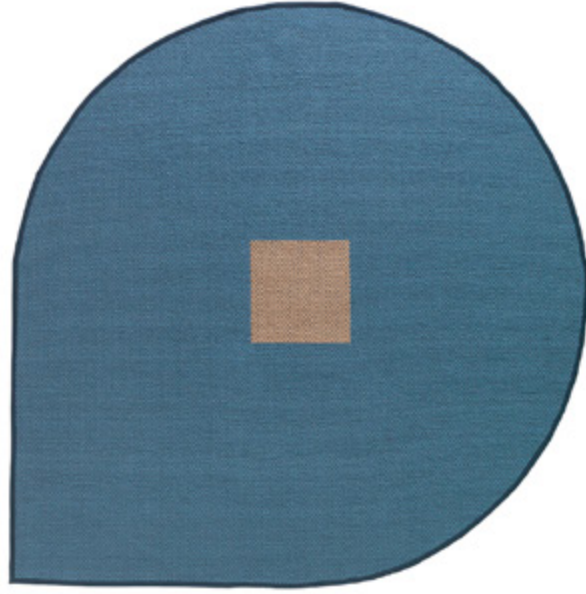
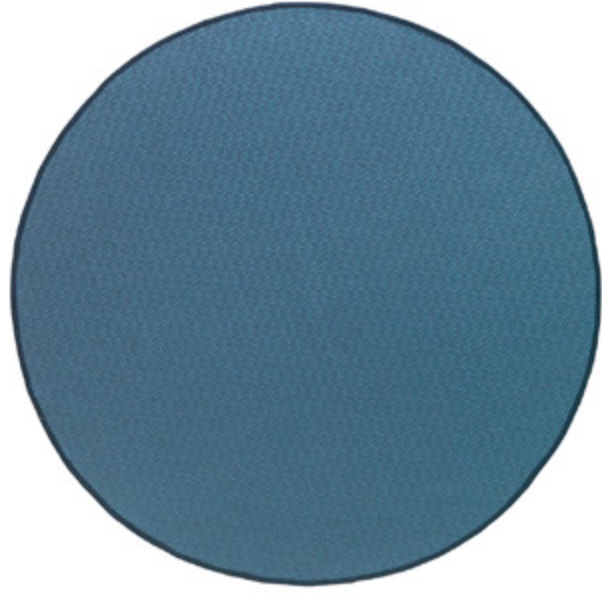
Functionality

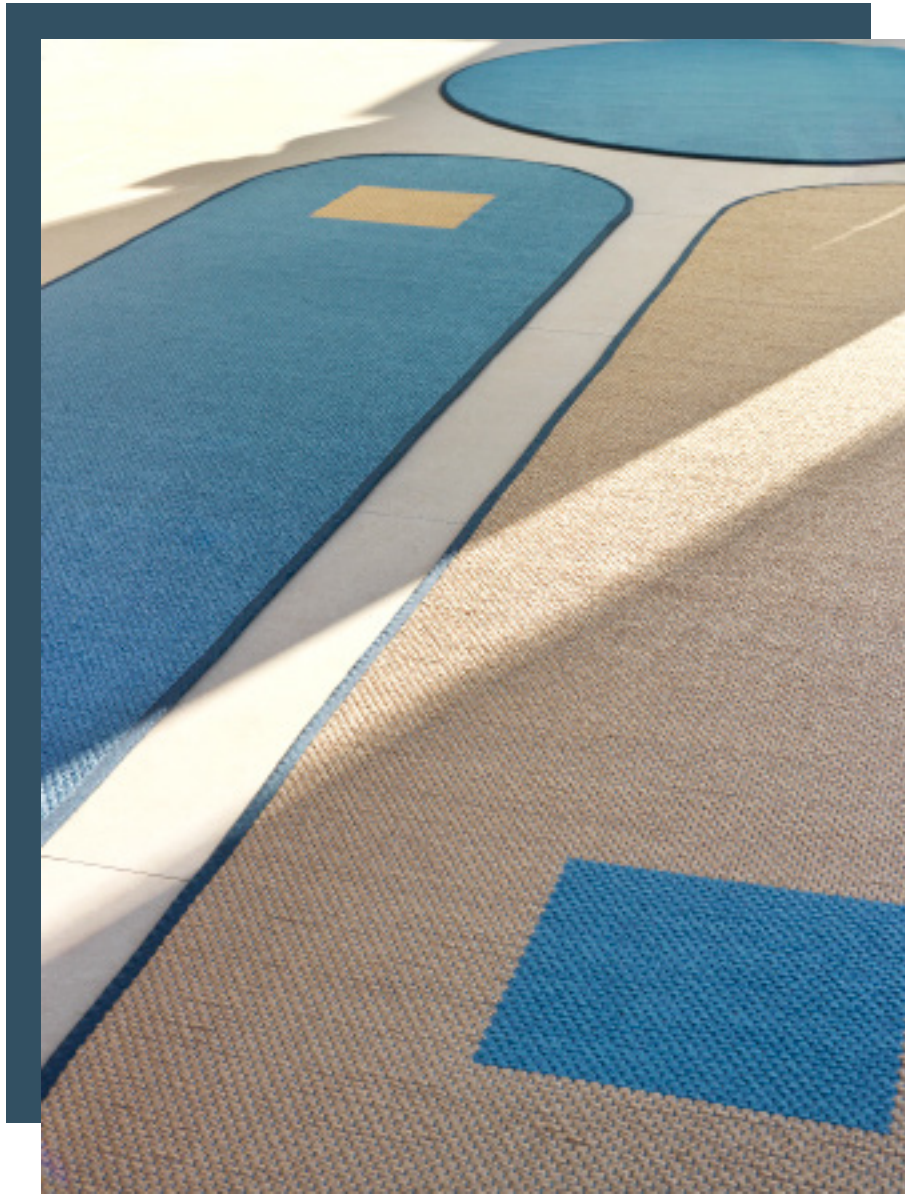
Adaptability

Versatility









2 rugs in 1

Two rugs in one, a reversible rug that creates the possibility of adapting the space at any time and creating a suitable environment in each situation.

Dos alfombras en una, una alfombra reversible que crea la posibilidad de adaptar el espacio en cada momento y crear un entorno adecuado en cada situación.

Deux tapis en un, un tapis réversible qui crée la possibilité d'adapter l'espace à tout moment et de concevoir un environnement approprié à chaque situation.

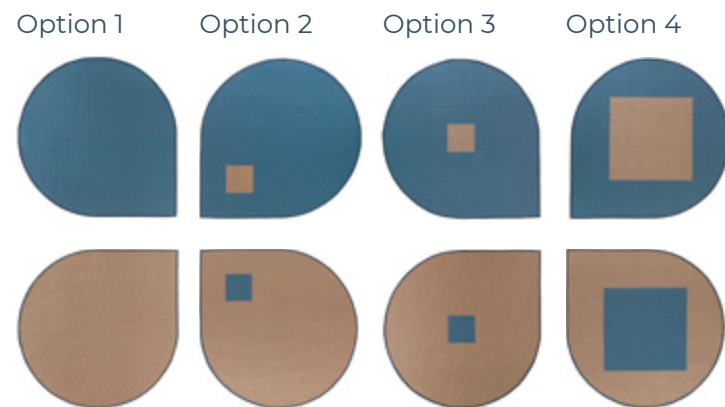


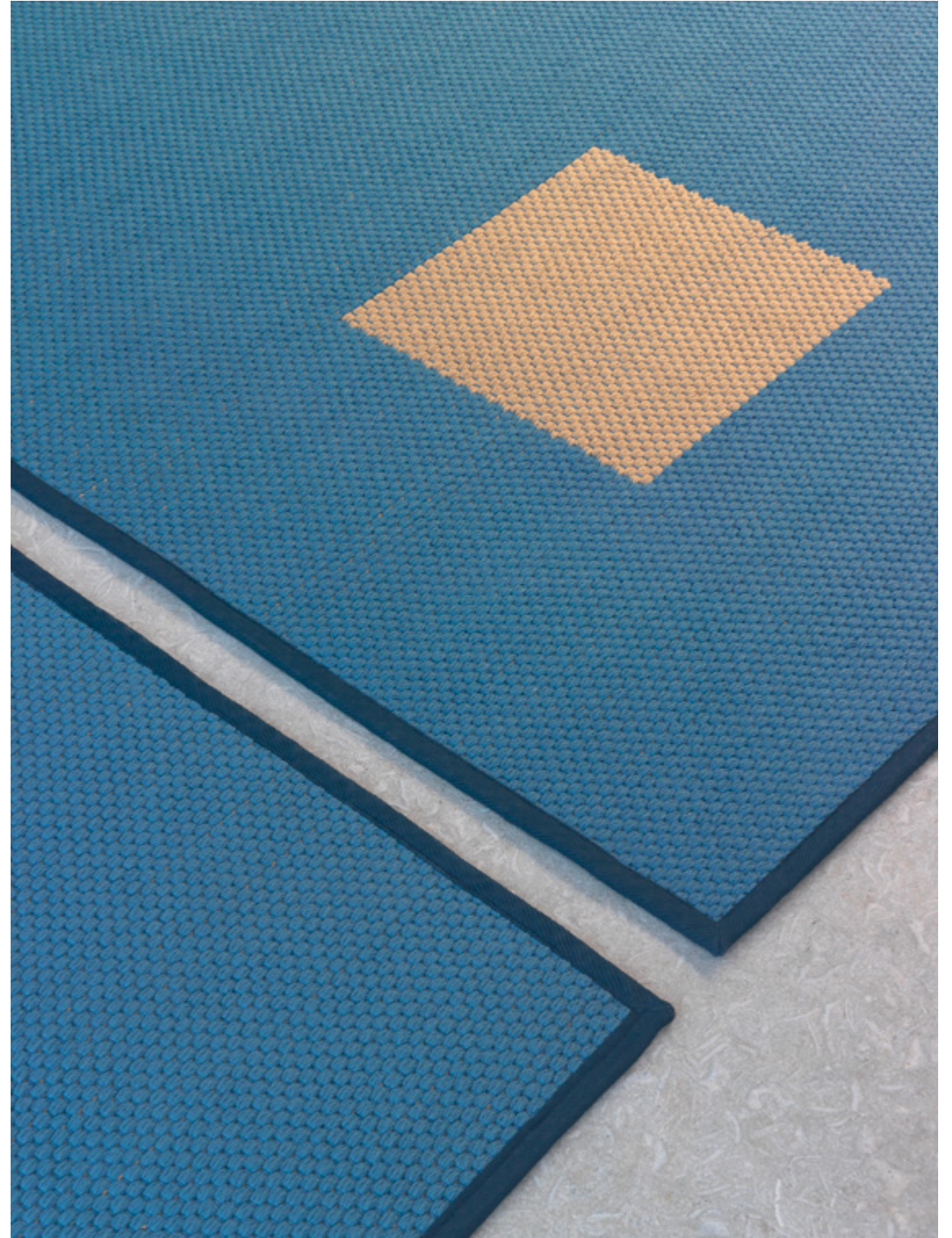
The shapes evolution

La evolución de las formas
L'évolution des formes

Tear

Tangram rugs are reversible and customizable.
Las alfombras Tangram son reversibles y customizables.
Les tapis Tangram sont réversibles et personnalisables.





Line

Tangram rugs are reversible and customizable.
Las alfombras Tangram son reversibles y personalizables.
Les tapis Tangram sont réversibles et personnalisables.

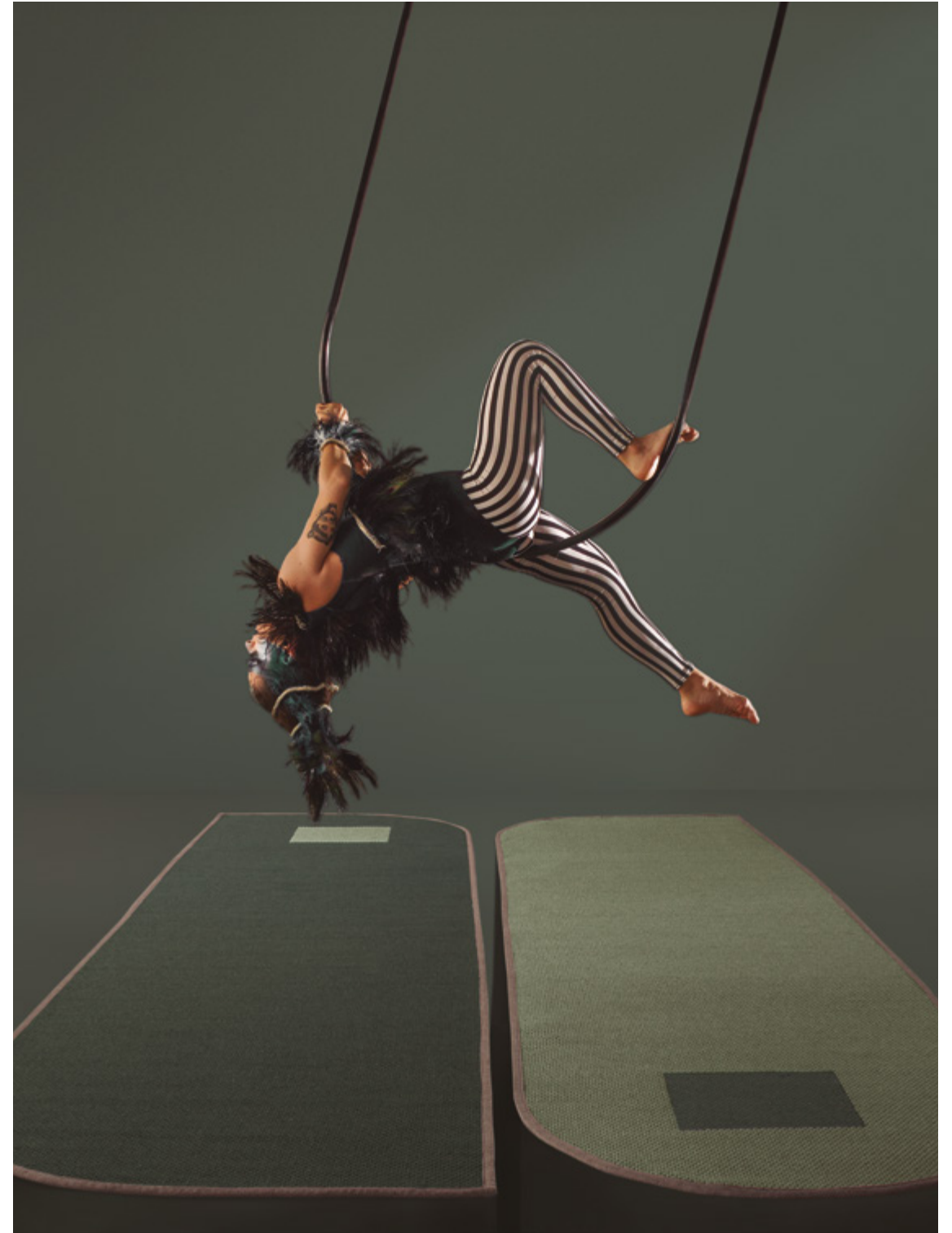
Line 1

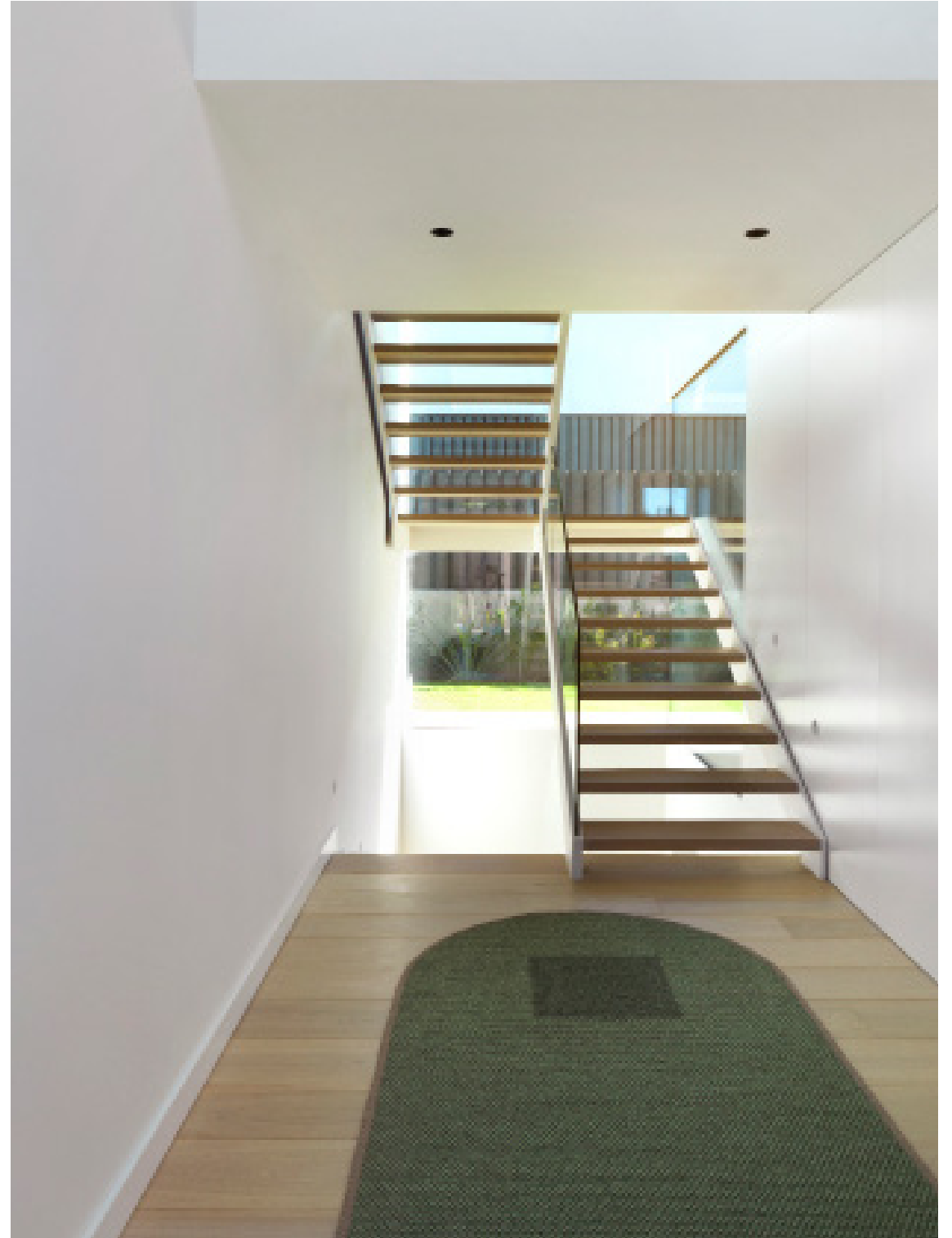


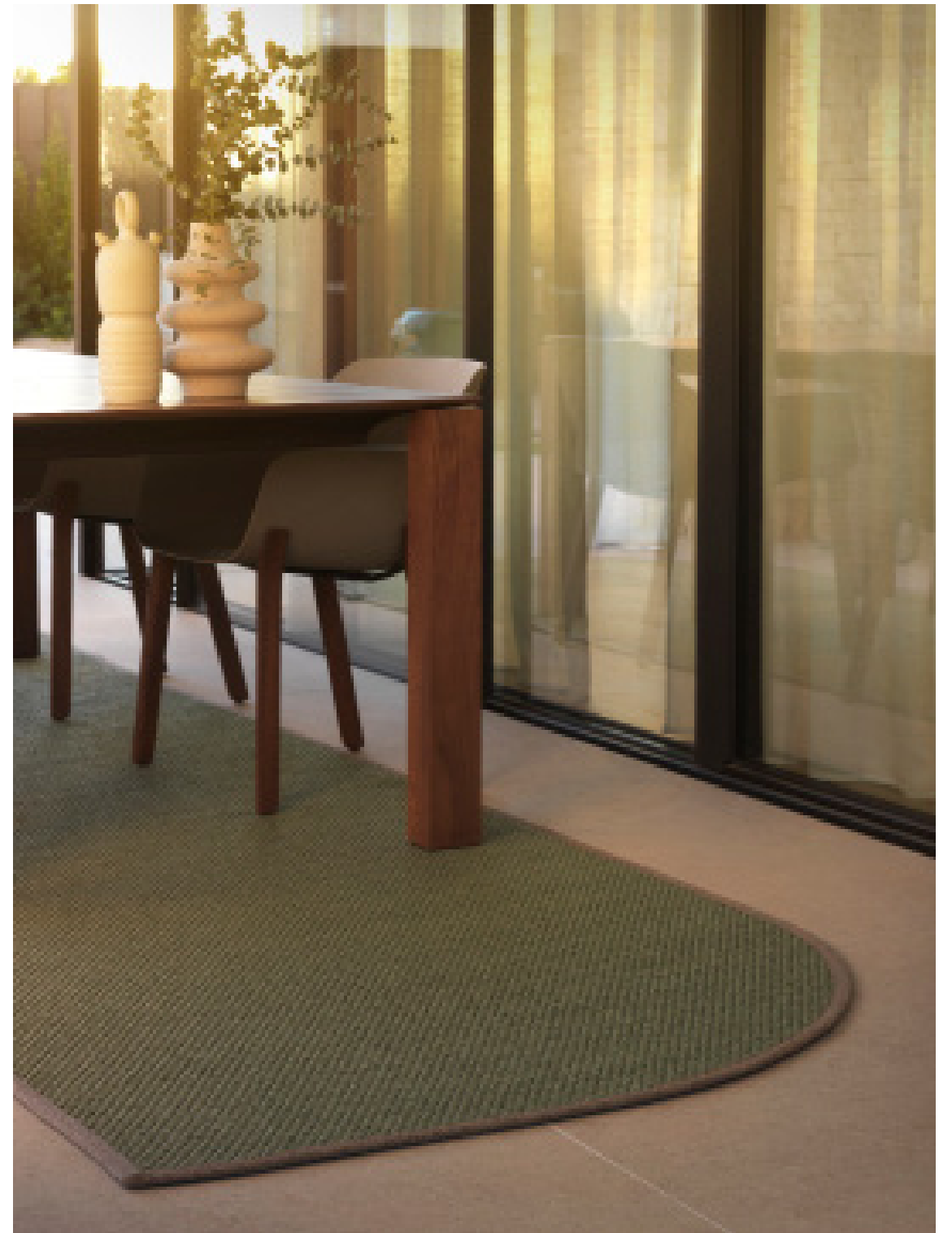
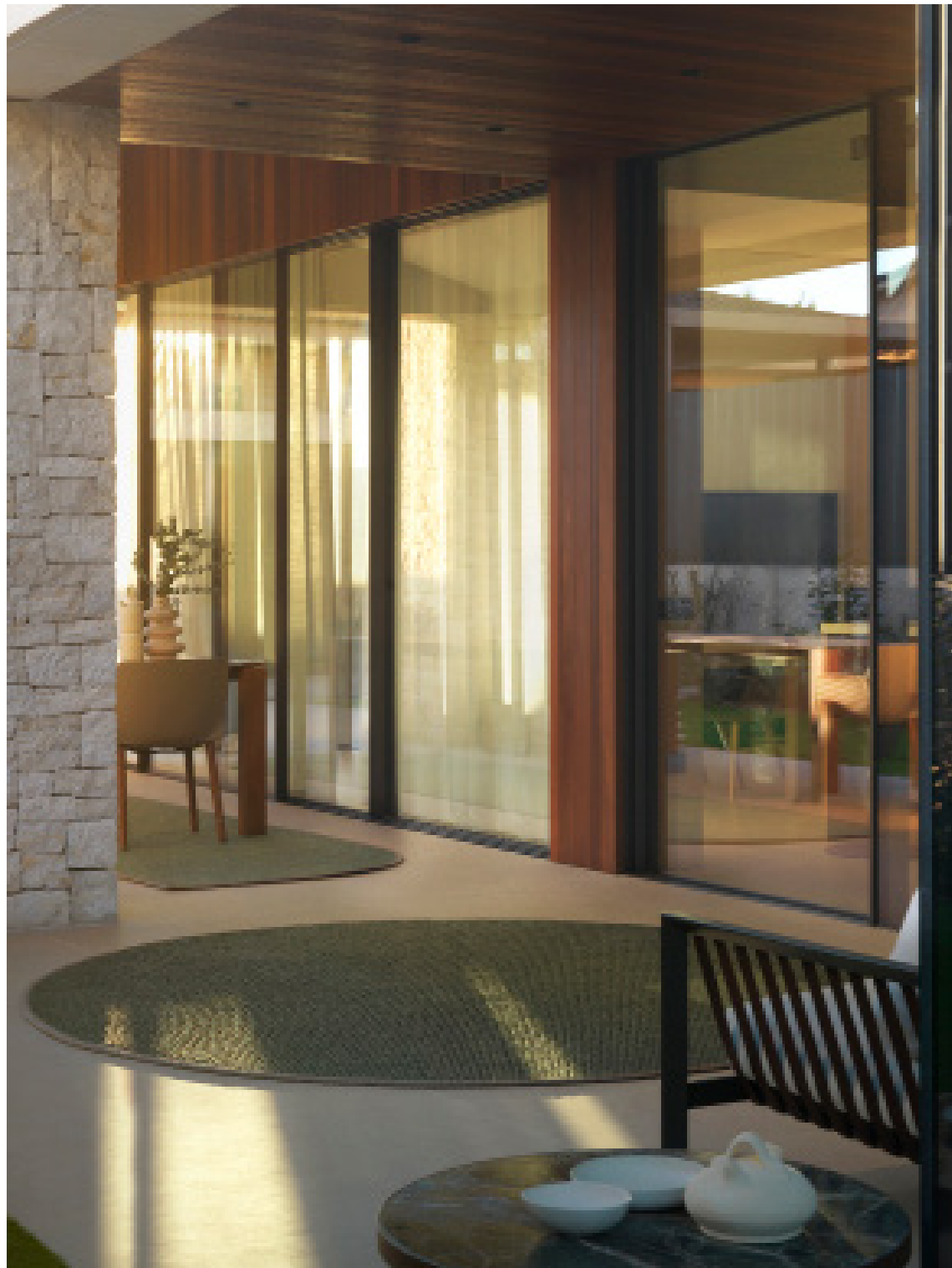
Line 2



Line 3







Moon

Tangram rugs are reversible and customizable.
Las alfombras Tangram son reversibles y customizables.
Les tapis Tangram sont réversibles et personnalisables.

Option 1



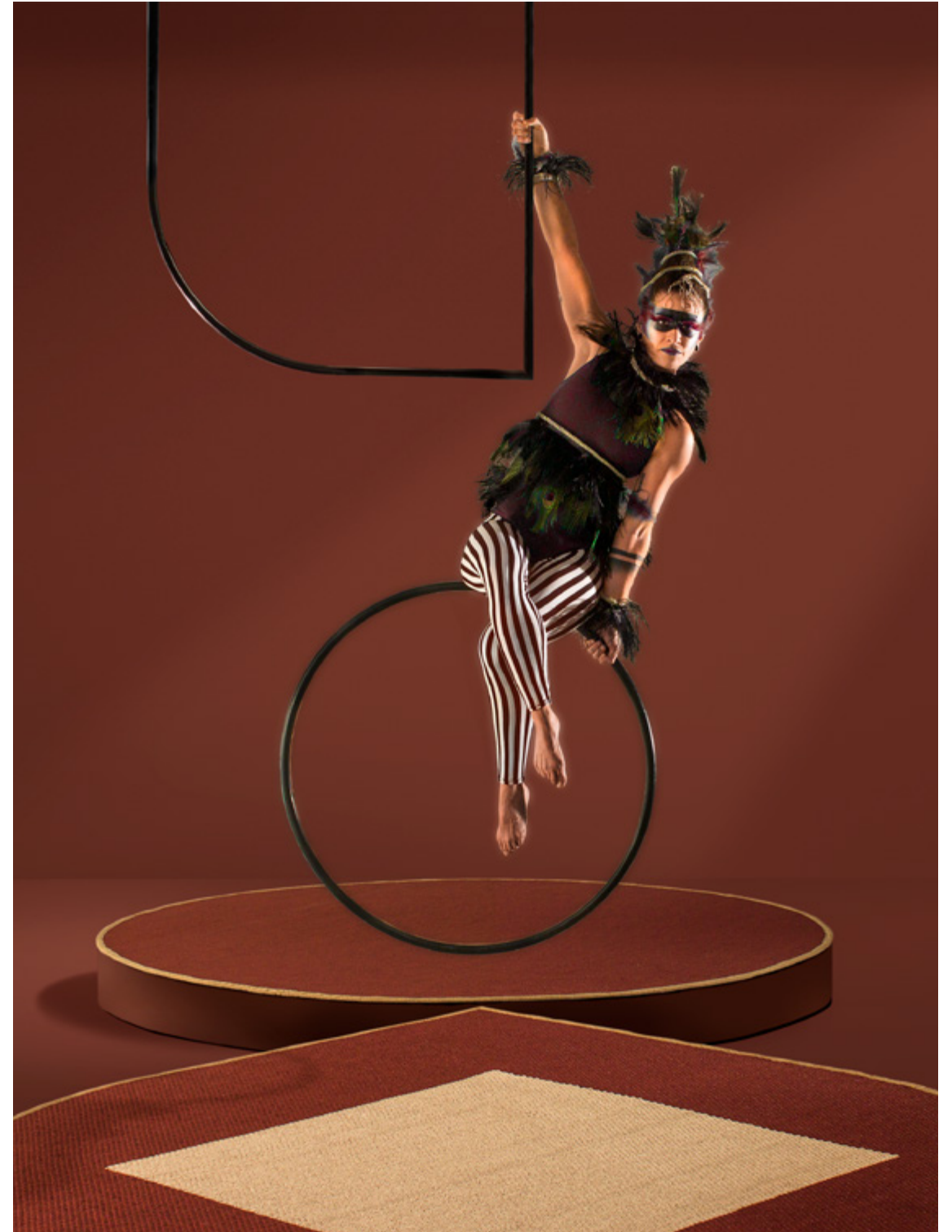
Option 2

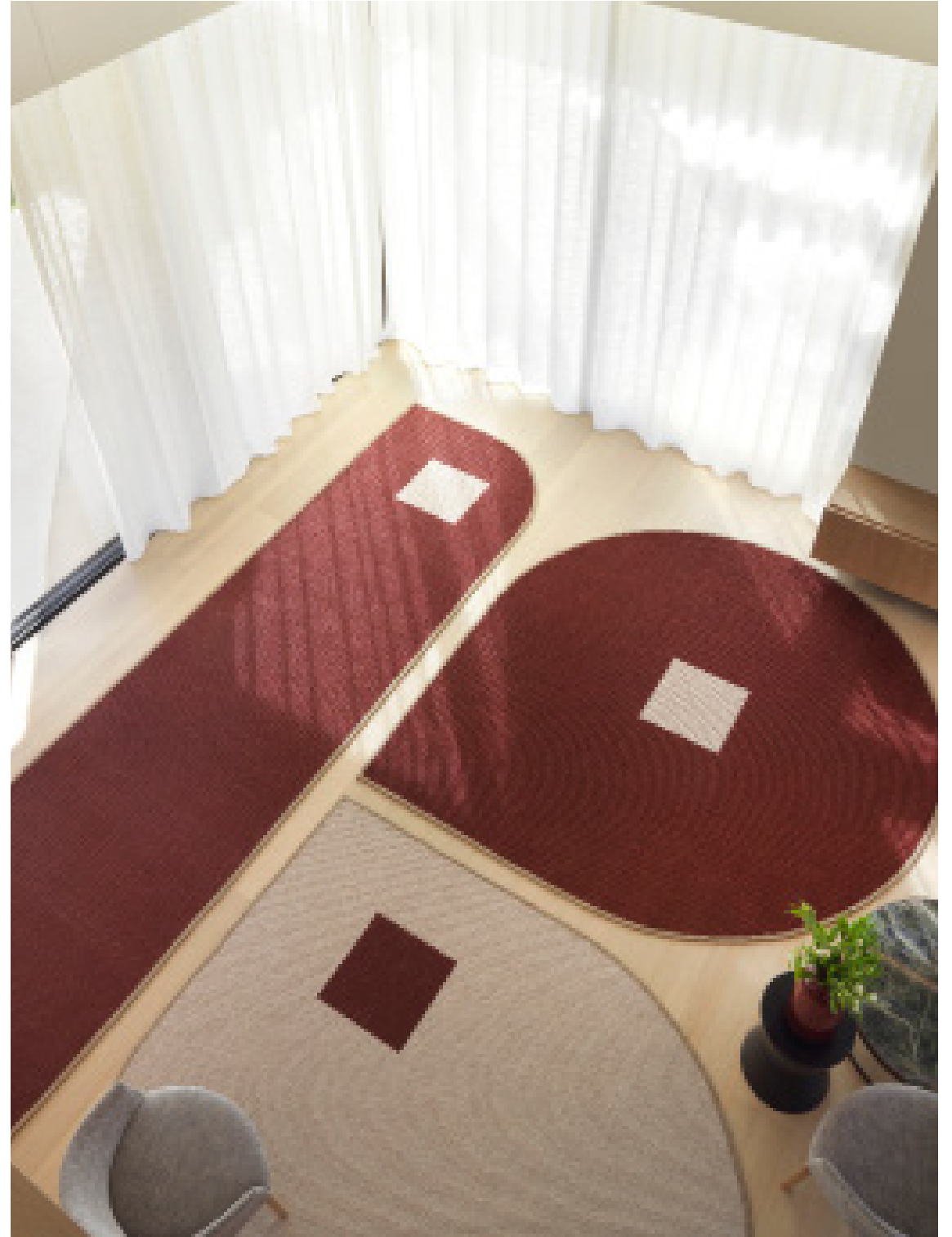


Option 3



Option 4

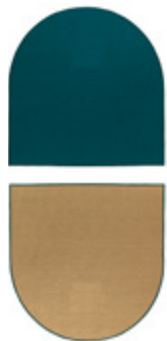




Half moon

Tangram rugs are reversible and customizable.
Las alfombras Tangram son reversibles y customizables.
Les tapis Tangram sont réversibles et personnalisables.

Option 1



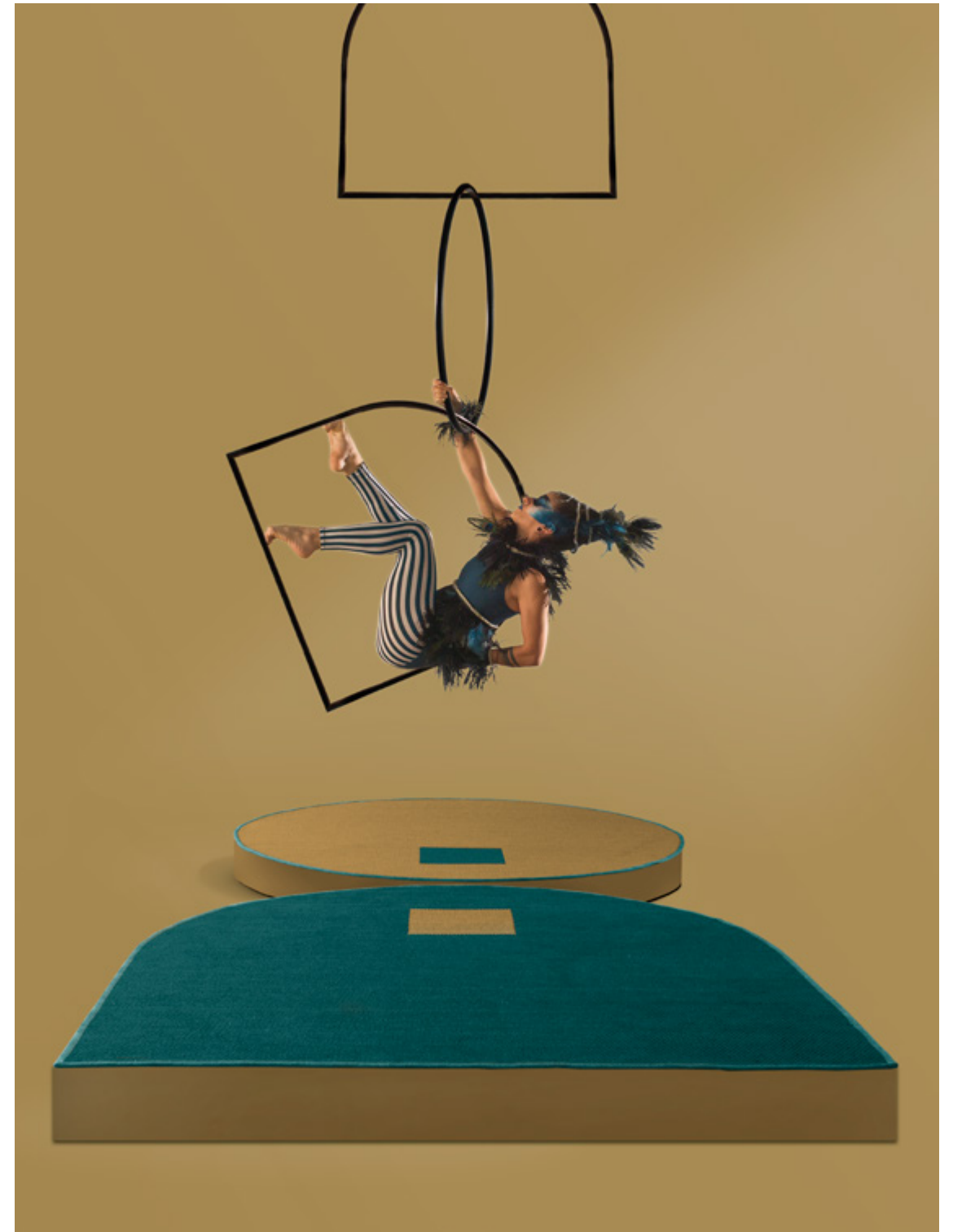
Option 2



Option 3



Option 4







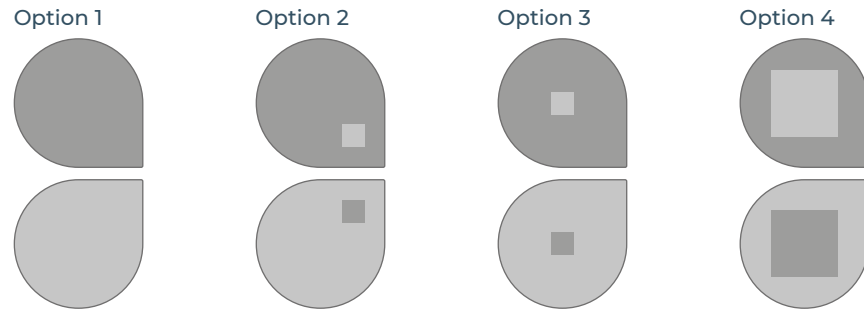
Details and technical info

Detalles e información técnica

Détails et informations techniques

Shape Options

Tear



Technical info | Información técnica | Information technique

All the rugs are reversible | Todas las alfombras son reversibles | Tous les tapis sont réversibles

Material: Polypropylene | Material: Polipropileno | Matériel: Polypropylène

SIZES | Tamaño | Mesures Ø 6' / 8' / 10' - 200 cm / 250 cm / 300 cm

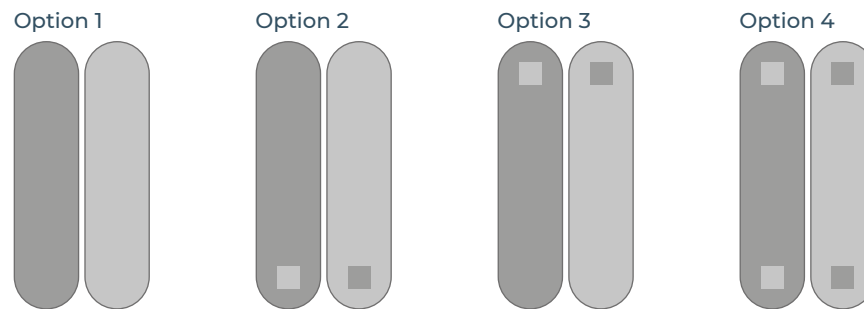
MAXIMUM WIDTH 18' | Ancho máximo 5,50 m | Largeur maximale 5,50 m

PILE 0,5 in | Altura 12,5 mm | Taille 1,5 mm

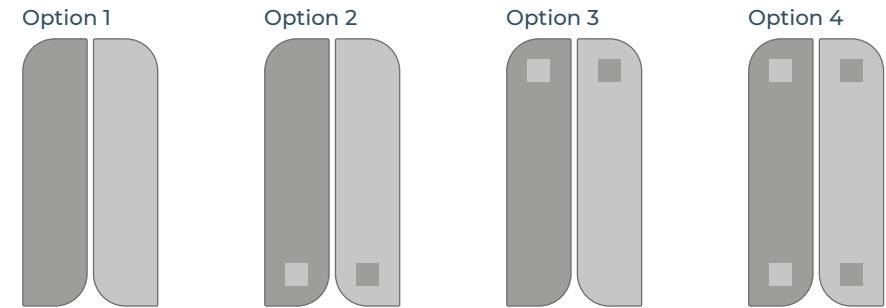
WEIGHT 10,65 oz/sqf | Peso 3,250 kg/m² | Poids 3,250 kg/m²

Contact us for custom carpets | Para personalizar, contáctanos | Pour personnaliser, contactez-nous.

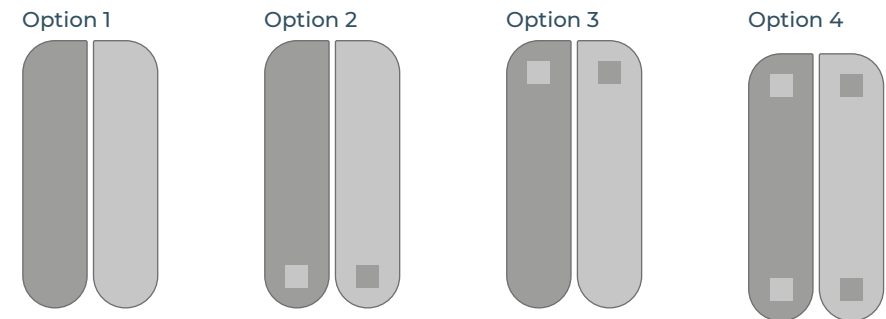
Line 1



Line 2



Line 3



Technical info | Información técnica | Information technique

All the rugs are reversible | Todas las alfombras son reversibles | Tous les tapis sont réversibles

Material: Polypropylene | Material: Polipropileno | Matériel: Polypropylène

SIZES | Tamaño | Mesures 2'x7' / 3'x8' / 4'x10' - 60x200 cm / 90x250 cm / 120x300 cm

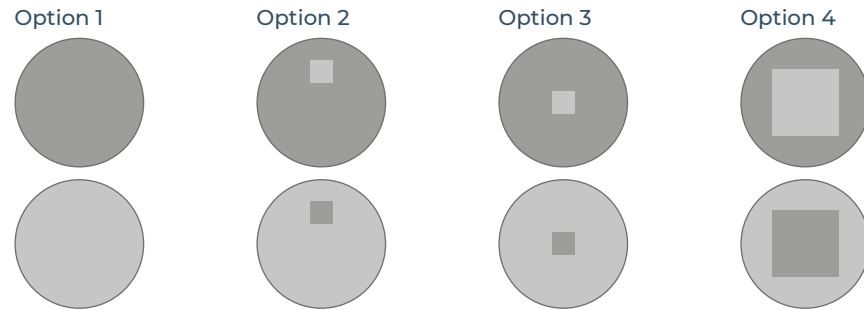
MAXIMUM WIDTH 18' | Ancho máximo 5,50 m | Largeur maximale 5,50 m

PILE 0,5 in | Altura 12,5 mm | Taille 12,5 mm

WEIGHT 10,65 oz/sqf | Peso 3,250 kg/m² | Poids 3,250 kg/m²

Contact us for custom carpets | Para personalizar, contáctanos | Pour personnaliser, contactez-nous.

Moon



Technical info | Información técnica | Information technique

All the rugs are reversible | Todas las alfombras son reversibles | Tous les tapis sont réversibles

Material: Polypropylene | Material: Polipropileno | Matériel: Polypropylène

SIZES | Tamaño | Mesures Ø 6' / 8' / 10' - 200 cm / 250 cm / 300 cm

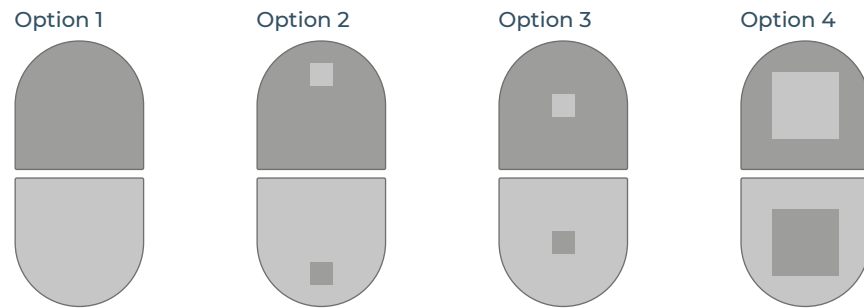
MAXIMUM WIDTH 18' | Ancho máximo 5,50 m | Largeur maximale 5,50 m

PILE 0,5 in | Altura 12,5 mm | Taille 12,5 mm

WEIGHT 10,65 oz/sqf | Peso 3,250 kg/m² | Poids 3,250 kg/m²

Contact us for custom carpets | Para personalizar, contáctanos | Pour personnaliser, contactez-nous.

Half moon



Technical info | Información técnica | Information technique

All the rugs are reversible | Todas las alfombras son reversibles | Tous les tapis sont réversibles

Material: Polypropylene | Material: Polipropileno | Matériel: Polypropylène

SIZES | Tamaño | Mesures 6'x9' / 8'x10' / 9'x12' - 170x240 cm / 200x300 cm / 250x300 cm

MAXIMUM WIDTH 18' | Ancho máximo 5,50 m | Largeur maximale 5,50 m

PILE 0,5 in | Alura 12,5 mm | Taille 12,5 mm

WEIGHT 10,65 oz/sqf | Peso 3,250 kg/m² | Poids 3,250 kg/m²

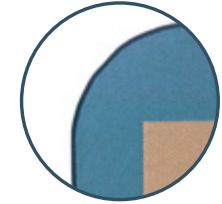
Contact us for custom carpets | Para personalizar, contáctanos | Pour personnaliser, contactez-nous.

Details

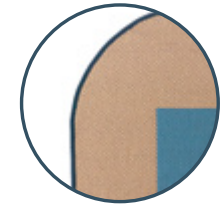


2 rugs in 1

Bottom side
Tape color 41
Background color 42
Square color 08



Bottom side
Tape color 41
Background color 08
Square color 42



Certificates

- 
 • It will pass through flammability test | Testado y certificado en el test de inflamabilidad | Testé et certifié dans le test d'inflammabilité 16CFR-1630 (FF1-70).
- 
 • It will pass through UVR transmission test | Testado y certificado en el test de transmisión UVR | Testé et certifié dans le test de transmission UVR AATCC183-210.
- 
 • It will pass through mildew resistance properties test | Testado y certificado en el test de propiedades de resistencia al moho | Testé et certifié dans le test des propriétés de résistance aux moisissures AATCC 174-20017 AATCC 30.
- 
 • ADA compliant | Cumple con la normativa ADA | Conforme à l'ADA.
- 
 • It will pass through colour fastness test, colour staining - in the level of 4/4.5 | Testado y certificado en el test de solidez de color - en el nivel 4/4.5 | Testé et certifié dans le test de solidité des couleurs - au niveau 4/4.5
 - Colour fastness to dry and wet crocking - 4 | Solidez del color al secado en húmedo y seco - 4 | Solidité des couleurs au séchage humide et sec - 4.
 - Colour fastness to light AATCC 16.3 after 300 hours - 4 | Solidez del color a la luz AATCC 16.3 despues de 300 horas | Solidité des couleurs à la lumière AATCC 16.3 après 300 heures.

Colors



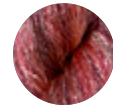
1. Marine green



2. Epson green



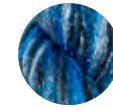
3. Pale green



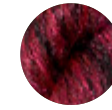
4. Porcelain red



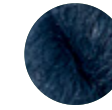
5. Peach pink



38. Brilliant blue



39. Crimson red



41. Indigo blue



42. Dusk blue



43. Snow white



6. Peaches pink



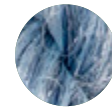
7. Sheepskin



8. Golden sand



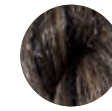
9. Ivory cream



10. Sterling blue



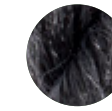
44. Garnet red



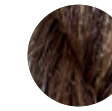
45. Chocolate chip



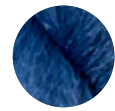
46. Wasabi



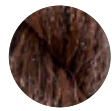
47. Charcoal gray



48. Dark earth



11. Moonlight blue



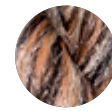
12. Cocoa brown



13. Mixed gray



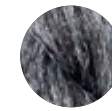
14. Black



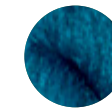
15. Apricot tan



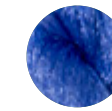
50. Azure blue



51. Frost gray



52. Mosaic blue



53. Dazzling blue



54. Dijon



16. Opal gray



17. Gunmetal



18. Olive



19. Dull gold



20. Honey yellow



55. Pale gold-T3



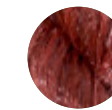
56. Sage-T3



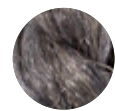
57. Pine-T2



58. Tango red



59. Brick red



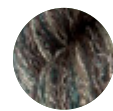
21. Steel gray



22. Gray almond



23. Almond



26. Aloe green



27. Dew



60. Red rose



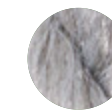
61. Cream-T2



62. Chambray



63. Denim



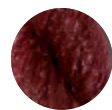
64. Light gray



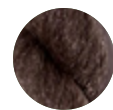
28. Taupe



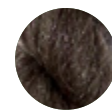
30. Golden Palm



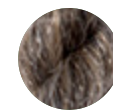
31. Tibetan red



32. Black ink-A



32. Black ink-B



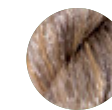
65. Bronze



66. Black earth



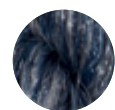
67. Silver



68. Copper



74. Dark denim



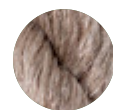
33. Navy blue



34. Aqua sky



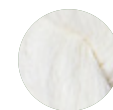
35. Tran. yellow



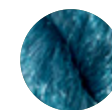
36. S. brown



37. Coconut



75. Milky white



76. Dark aqua



77. Lyons tea



78. Burnt orange

How to order

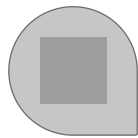
*All the rugs are reversible, the combination on the reverse side will be the opposite except for the border that will remain the same color in both sides.

*Todas las alfombras son reversibles, la combinación en el reverso será la opuesta a excepción de la greca que tendrá el mismo color en las dos caras.

*Tous les tapis sont réversibles, la combinaison sera opposée sur l'envers, sauf la bordure qui aura la même couleur des deux côtés.

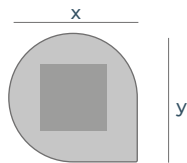
1. Choose your shape and design | Elige la forma y el diseño | Choisissez la forme et le design.

Tear / Option 4



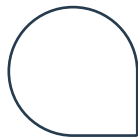
2. Choose your size | Elige el tamaño | Choisissez la dimension.

- Ø 8' / 250 cm

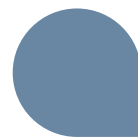


3. Choose your colors | Elige tus colores | Choisissez vos couleurs.

3.1. Tape color
- Indigo blue 41



3.2. Background color
- Dusk blue 42



3.2. Square color
- Golden sand 08

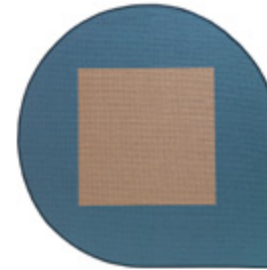


4. Your order | Tu pedido | Votre commande.

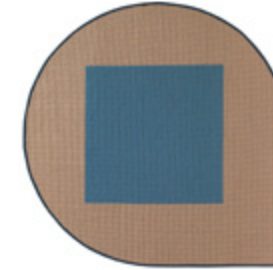
- 1. Tear / Option 4
- 2. Ø 8' / 250 cm
- 3.1. Indigo blue 41
- 3.2. Dusk blue 42
- 3.3. Golden sand 08



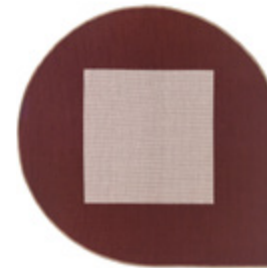
Colors in pictures



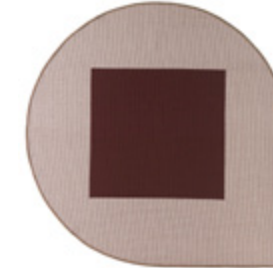
Tear option 4
Tape color 41
Background color 42
Square color 08



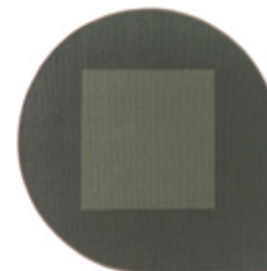
Tear option 4
Tape color 41
Background color 08
Square color 42



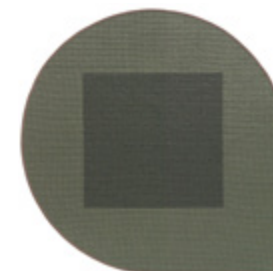
Tear option 4
Tape color 37
Background color 31
Square color 09



Tear option 4
Tape color 37
Background color 09
Square color 31



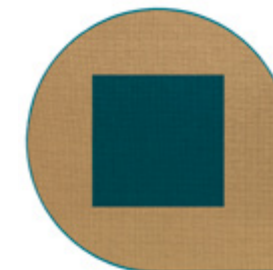
Tear option 4
Tape color 68
Background color 57
Square color 56



Tear option 4
Tape color 68
Background color 56
Square color 57



Tear option 4
Tape color 76
Background color 76
Square color 08



Tear option 4
Tape color 76
Background color 08
Square color 76

Cleaning and care

We manufacture our rugs with the best materials, however they require certain care to guarantee a longer life:

- Vacuum the rug regularly at medium power and always in the direction of the pile.
- Never use the brush attachment as it will damage the wool strands.
- Vacuum clean without rubbing so that any surplus fibres or fluff disappear.
- Check that the vacuum cleaner bag is clean.
- We recommend rotating the carpet to ensure that normal wear occurs uniformly.
- Do not use chemical products or dry clean the carpet as this will damage its colours.
- Every so often take the carpet to a specialized carpet-cleaning establishment.
- When a stain occurs take action as quickly as possible. Wipe the stained area with a damp, white cloth to get rid of most of the stain, especially if the carpet has an anti-stain treatment.
- Never rub a liquid stain, try to soak it up using a clean cloth, absorbent cardboard or sponge.
- Always use cold or warm water, never hot water as this fixes the stain
- If the stain is a solid or goeey product it should be removed first using a spatula or damp spoon before applying a stain remover.
- This operation should be performed from the outside to the inside.
- Try to get rid of all remains of the stain before applying a stain remover.
- Before using a product read the instructions carefully and check that it will not discolour the carpet.

Our Tangram Collection can be cleaned with soap and pressurized water. Check our video scanning the QR code.



Limpieza y cuidados

Producimos nuestras alfombras con las mejores fibras, pero requieren ciertos cuidados para garantizar una vida más larga:

- Aspirar la alfombra regularmente a potencia media y siempre en el sentido de las fibras.
- Nunca utilice cepillos, ya que dañará los hilos de lana.
- Aspirar sin frotar para que desaparezcan los restos de fibras o pelusas.
- Comprobar que la bolsa de la aspiradora esté limpia.
- Recomendamos rotar la alfombra para asegurar que el desgaste se produzca de manera uniforme.
- No utilice productos químicos ni limpie en seco la alfombra ya que esto dañará sus colores.
- De vez en cuando llevar la alfombra a un establecimiento especializado en limpieza de alfombras.
- Cuando se produzca una mancha, actuar lo antes posible. Limpia el área manchada con un paño blanco húmedo para eliminar la mayor parte de la mancha, especialmente si la alfombra tiene un tratamiento antimanchas.
- Nunca frote una mancha líquida, trate de absorberla con un paño limpio, cartón absorbente o esponja.
- Utilizar siempre agua fría o templada, nunca agua caliente ya que fija la mancha.
- Si la mancha es un producto sólido o pegajoso, se debe eliminar primero con una espátula o cuchara húmeda antes de aplicar un quitamanchas
- Esta operación debe realizarse desde el exterior hacia el interior.
- Intentar eliminar todos los restos de la mancha antes de aplicar un quitamanchas.
- Antes de usar un producto, lea atentamente las instrucciones y verifique que no decolore la alfombra.

Nuestra Colección Tangram se puede limpiar con jabón y agua a presión. Consultar nuestro video escaneando el código QR.



Nettoyage

Nos tapis sont fabriqués avec les meilleures fibres, mais ils demandent certains soins afin de garantir une durée de vie plus longue.

- Aspirez le tapis régulièrement à puissance moyenne et toujours dans le sens des fibres.
- N'utilisez jamais de brosse, car elle abîme les fils de laine.
- Aspirez sans frotter pour que les résidus de fibres ou de peluches disparaissent.
- Vérifiez que le sac de l'aspirateur soit propre.
- Nous recommandons de retourner le tapis pour assurer une usure uniforme.
- N'utilisez pas de produits chimiques et ne lavez pas le tapis à sec, car cela pourrait abîmer ses couleurs.
- De temps en temps, faites nettoyer le tapis dans un établissement spécialisé.
- Dès l'apparition d'une tache, veuillez agir le plus rapidement possible. Nettoyez la zone tachée avec un chiffon blanc humide afin d'éliminer la tache au maximum, en particulier si le tapis possède un traitement antitaches.
- Ne frottez jamais une tache liquide, essayez de l'absorber avec un chiffon propre, du carton absorbant ou encore une éponge.
- Utilisez toujours de l'eau froide ou tiède, jamais de l'eau chaude, car elle fixe la tache.
- Si la tache est un produit solide ou collant, il faut d'abord l'éliminer avec une spatule ou une cuillère humide avant d'appliquer un produit détachant.
- Cette opération doit se réaliser de l'extérieur vers l'intérieur.
- Essayez d'éliminer tous les résidus de la tache avant d'appliquer le détachant.
- Avant d'utiliser un produit, lisez attentivement les instructions et vérifiez qu'il ne décolore pas le tapis.

Notre Collection Tangram peut se nettoyer avec du savon et de l'eau sous pression. Regardez notre vidéo en scannant le code QR:



CREATING TREND..

Contemporary

Tradition

Culture

First edition:

January 2022

Marketing management:

Ignasi Soler

Graphic design and art direction:

Ignasi Soler
Mimus comunicaci3n

Photos:

Mimus comunicaci3n

Special thanks to:

Nonna Design
Mimus comunicaci3n
Miriam Morante
Miguel Paracuellos

2022 copyright® NOW CARPETS DESIGN INC.

The book may not be reproduced, in whole or
in part, by any method or process, without writ-
tten permission from NOW Carpets Design inc.

www.nowcarpets.com

NOW CARPETS DESIGN INC
USA: usa@nowcarpets.com
174 fifth ave. suite 503
new york NY 10010 (usa)

NOW CARPETS DESIGN INC
USA: usa@nowcarpets.com
Ponce de Le3n BLVD
Coral Gables, FL 33134 (usa)

NOW CARPETS DESIGN SC
Spain: now@nowcarpets.com
pº independencia 8 dup.2ª
50004 zaragoza (Spain)

